

**Anritsu** envision : ensure

# Signal Quality Analyzer-R

PCIe/USB/Thunderbolt Test Solutions\*

## MP1900A

 **SQA-R**



\*: Refer to the 32G/64G NRZ/PAM4 Signal Integrity Test Solution Catalog (MP1900A\_64G-E-A-1) for the information on MP1900A PAM4 test solution.



# Support 400 GbE and PCIe Gen4/5

Due to the explosive growth of data traffic resulting from the popularity of smartphones and mobile terminals, network interfaces are transitioning to faster 200 GbE/400 GbE standards, and PCI bus interface speeds now exceed 10G. In addition, the equipment and chipsets using these interfaces support multi-channels and multi-protocols. The MP1900A is a high-performance BERT with excellent expandability for supporting Physical layer evaluations of these high-speed interfaces. The all-in-one design is ideal for early stage R&D evaluations of all interfaces covering next-generation Ethernet networks to bus interconnects.

## MP1900A Signal Quality Analyzer-R



Supports  
PCI Express  
Gen5 Base  
Specification  
Rx Test



### Excellent Expandability

All-in-one support for both high-speed Ethernet and PCI Express interface tests

Supports transmissions up to 512 Gbit/s

- 32G bandwidth : 16ch NRZ, 8ch PAM4
- 64G bandwidth : 4ch NRZ, 4ch PAM4

8 slots for adding extra modules

Backwards compatibility with MP1800A series modules

### Link Training

Receiver tests are supported by the built-in Protocol Awareness PCIe Link Training, USB Link Training and LTSSM analysis functions.

Supports PCI Express Gen 1/2/3/4/5  
USB3.2 Gen1/2

### Signal Integrity Evaluation

10Tap Emphasis built-in

Variable ISI Function

Multi-band CTLE

CDR Function (supports SSC)

Jitter Addition (SJ/RJ/BUJ/SSC) function

Voltage Noise Addition

(CM/DM/Gaussian) function

### High Waveform Quality and High Sensitivity

Low Intrinsic (Residual) Jitter output (115 fs rms)

High-sensitivity Data input (15 mV)

Operation bit rates from 2.4 Gbit/s to 32.1 Gbit/s



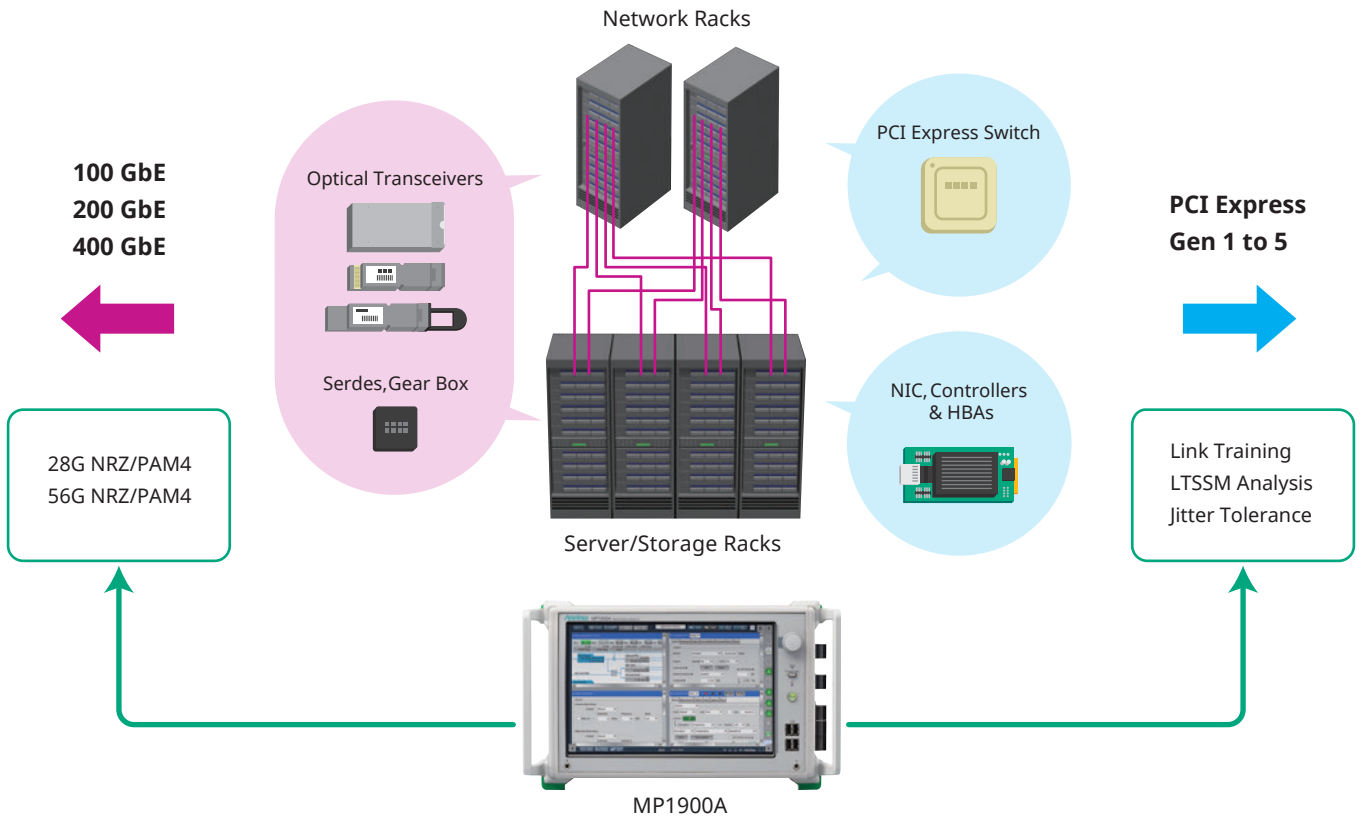
## Wide Application Support

100 GbE/200 GbE/400 GbE/800 GbE, CEI-25G/28G/56G/112G, InfiniBand EDR/HDR, Fibre Channel  
 PCI Express Gen 1/2/3/4/5, Thunderbolt 1/2/3, USB3.2/4 Type C  
 Optical module, SERDES, AOC, High-speed Interconnect

# Excellent Expandability

## All-in-One Support for Evaluating Next-Generation NRZ/PAM4 Network Interfaces and High-Speed Serial Buses

The Signal Quality Analyzer-R MP1900A is a modular Bit Error Rate Tester (BERT) supporting equipment external interfaces, such as next-generation Ethernet, by installing a pulse pattern generator (PPG) for outputting high-quality multi-channel NRZ/PAM4 signals over a wide bandwidth, a high-sensitivity input error detector (ED), Jitter modulation sources for Jitter Tolerance tests, etc. Additionally, optional noise generation and 10Tap Emphasis functions can be installed for Voltage Noise Tolerance tests, etc., and installing the High-Speed Serial Data Test Software software enables efficient design evaluation for increasingly faster PCIe, USB, and Thunderbolt receivers.



**Ethernet Evaluation** + **PCI Express Evaluation** = **MP1900A**

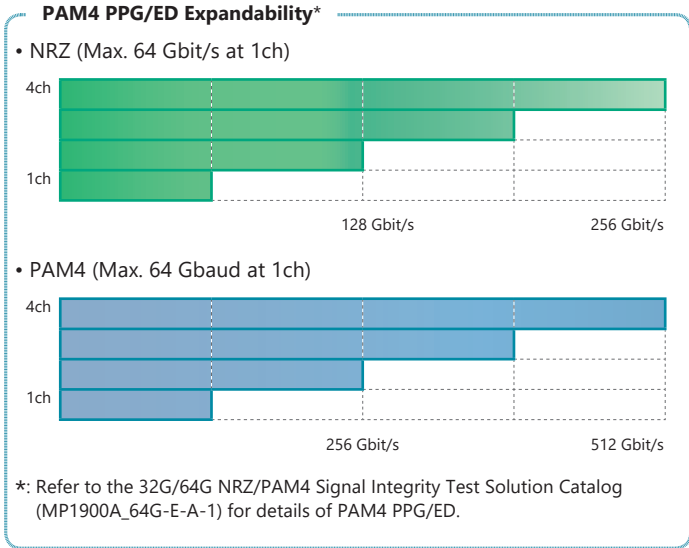
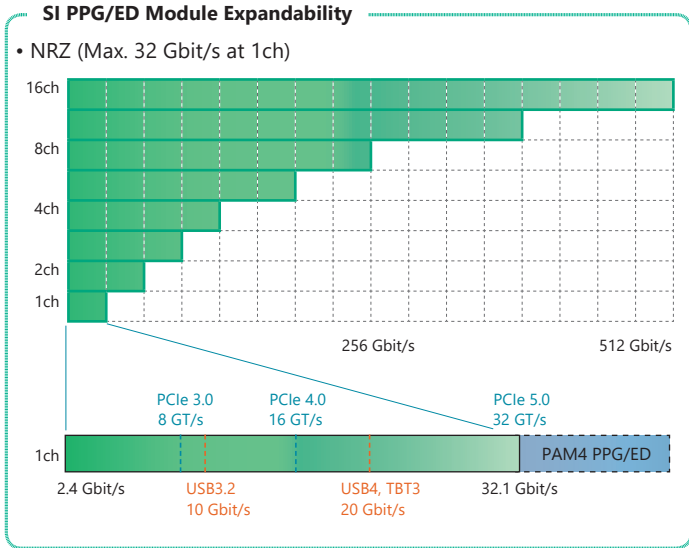
**High Cost Performance**  
**Space Factor Improvement**  
**Shorter Inspection Time**

**One Unit Supporting Evaluation of both High-Speed Network Devices and High-Speed Serial Buses**

# Excellent Expandability

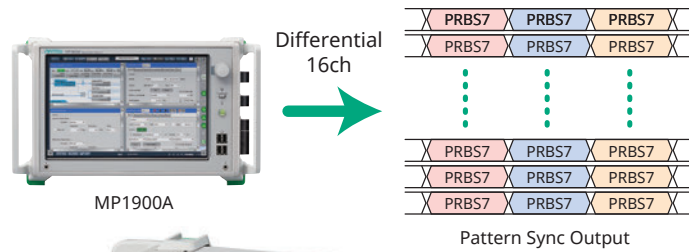
## Easy Flexibility for Multi-Channel Measurements at Various Transmission Rates and Formats

400 GbE is the standard for the next generation of large-capacity transmissions but it is still unknown how much further data traffic will grow. To cope with this data traffic growth, in addition to speeding-up NRZ signals and introducing multi-channel signalling, introduction of PAM4-format signals is also progressing. To facilitate this change to multi-channels and the new PAM4 signals, the MP1900A series is an 8-slot modular instrument that can be easily customized by selecting and adding required function modules. This flexible expandability supporting the latest communications methods ensures both efficient R&D investment and the fastest time to market.



In addition to installing PPG, ED, and noise-generation modules in the 8-slot main unit, existing modules for the previous MP1800A series can also be installed. The 21G/32G bit/s SI PPG/ED modules support selection of both one and two channels, enabling up to 16-channel measurement for both the PPG and ED. The PAM4 PPG and ED modules can be installed simultaneously to support up to a 4ch PPG and 4ch ED in a one channel per module configuration. Moreover, the pattern for each channel can be synchronized, providing an ideal solution for evaluating DAC, MUX and DEMUX devices as well as for crosstalk and skew tolerance tests.

\*: Refer to the MP1900A Selection Guide for details of the supported multi-channel configurations and module combinations. Consult our business sales representative for use of other module configurations not described in the MP1900A Selection Guide.

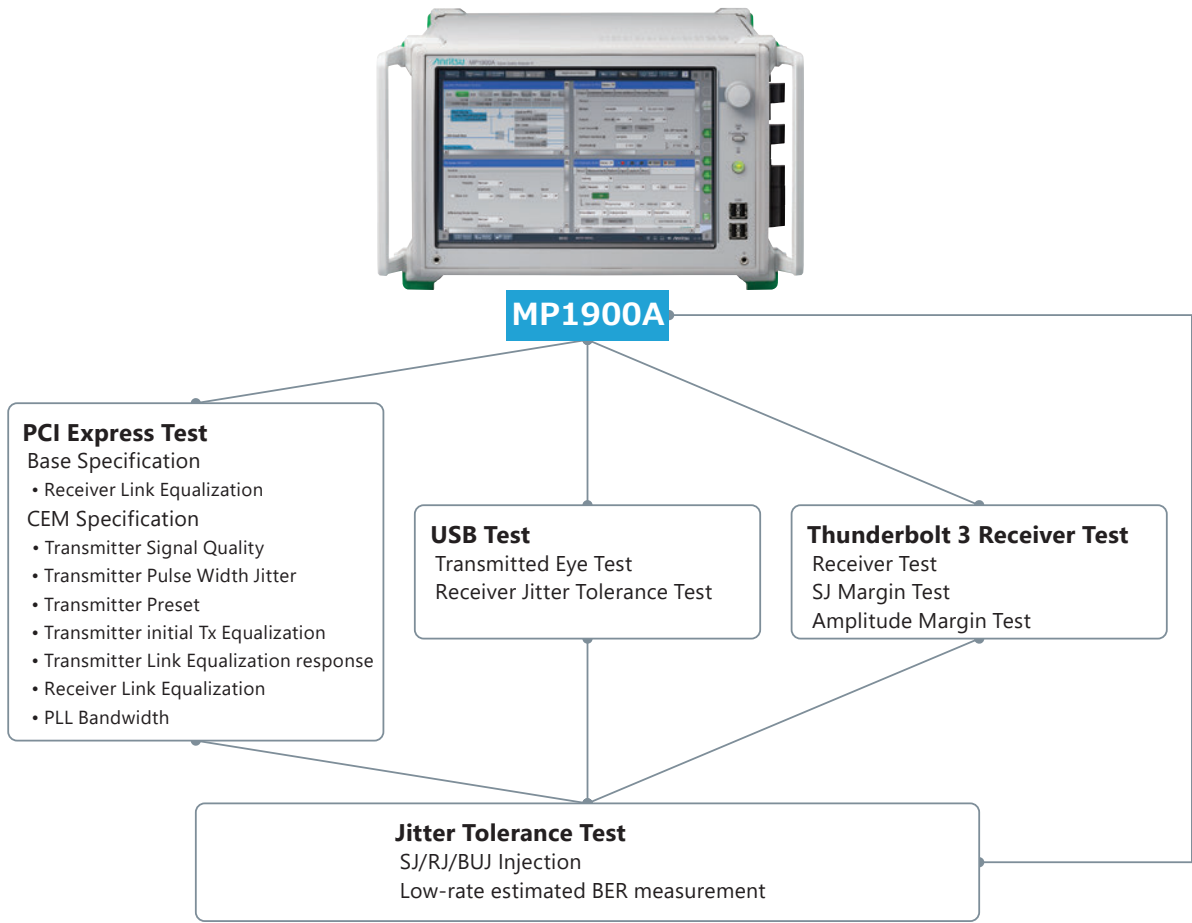


# Multi Interface

## Next-Generation High-Speed Digital Interface Receiver Test

The growth of IoT and Cloud computing applications is driving the need for digital equipment with high-speed serial interfaces handling large data volumes. To meet this need, the PCI Express (PCIe) and USB interfaces used by this digital equipment are transitioning to both next-generation PCIe Gen5 supporting speeds up to 32 GT/s as well as to Type-C USB3.2 Gen2 supporting 10 Gbit/s and USB4 supporting 20 Gbit/s, which is also compatible with Thunderbolt.

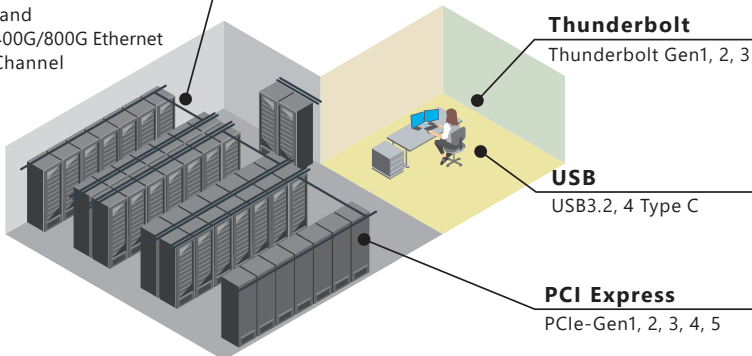
The MP1900A is a wideband BERT with a built-in Gbit/s-class PPG, ED, and Jitter/Noise addition functions as well as application software supporting measurement of next-generation, high-speed digital-interface standards (CEI-28G/56G/112G, InfiniBand, 100G/400G/800G Ethernet, Fibre Channel, Thunderbolt 3, PCIe, USB) from development through to manufacturing.



## Target Applications

### General Interfaces

CEI-28G/56G/112G  
 InfiniBand  
 100G/400G/800G Ethernet  
 Fibre Channel



### Various Applications

Supports internal and external interfaces, such as Ethernet, PCI Express, as well as USB3.2, 4/ Thunderbolt via USB Type-C connector and cables.

Anritsu supports Gen5 tests with the same configuration used for Gen3/4 solutions.

# Full Automation

## Full Automation Software

The Compliance Test Automation Software packages from GRL Corporation and Teledyne LeCroy Corporation offer fully automated high-speed, serial-bus interface receiver tests.

These software packages control the MP1900A (PPG/ED, noise-generation signal source, variable ISI channel) and realtime oscilloscope to reduce test engineer's work burden by automating the complex calibration for the high-speed serial-bus receiver test, and the Jitter Tolerance test.

The fully automated calibration, testing, and report creation with simple measurement and high reproducibility help cut test times by reducing workloads.

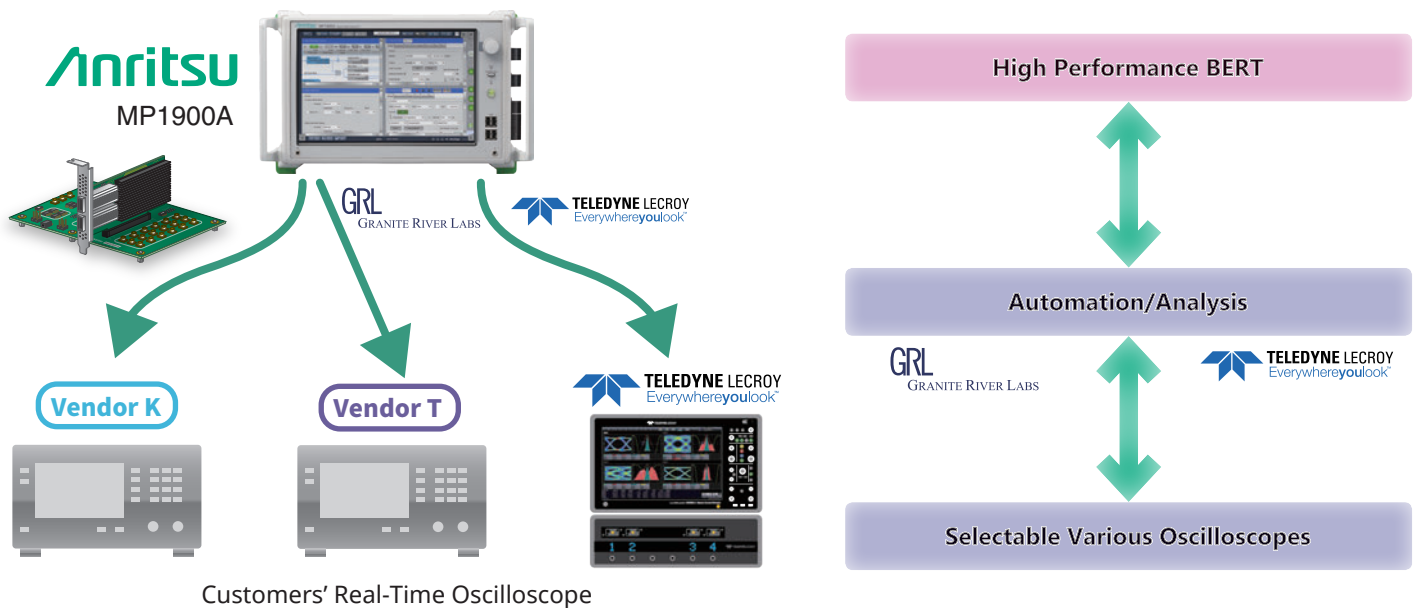
### Features

- Controls each measuring instrument to simplify Eye Opening calibration, measurement conditions settings, and test execution
- Calibrates test signal with high reproducibility and executes receiver test
- Automates standards-compliant Jitter and amplitude Pass/Fail evaluations

### Free Oscilloscope Selection

The MP1900A can be combined freely with customers' realtime oscilloscopes, helping cut setup costs.

\* Please enquire about supported oscilloscopes.



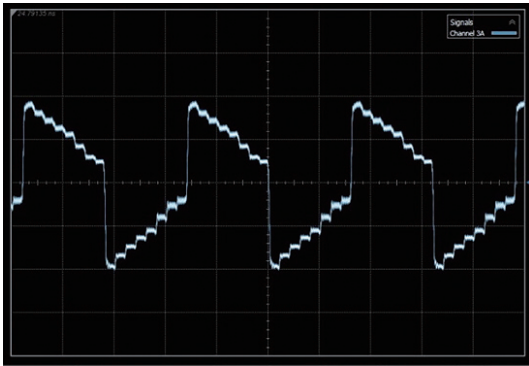
# SI PPG/ED Signal Integrity Evaluation

## Strengthened Signal Integrity Evaluations in Addition to New SI PPG, SI ED and Noise Generator Modules

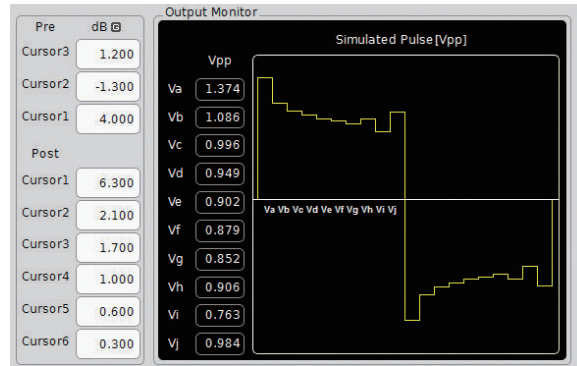
Emphasis and equalizer functions are built-in to correct transmission path losses and assure signal integrity as signals become faster and as high-speed devices use lower signal levels to help reduce power consumption.

### 10Tap Emphasis

The 10Tap Emphasis option installed in the transmission-side 21G/32 Gbit/s SI PPG MU195020A can accurately replay simulated waveforms for various devices and channels (corrected for loss after passage through channel) to help improve design efficiency.



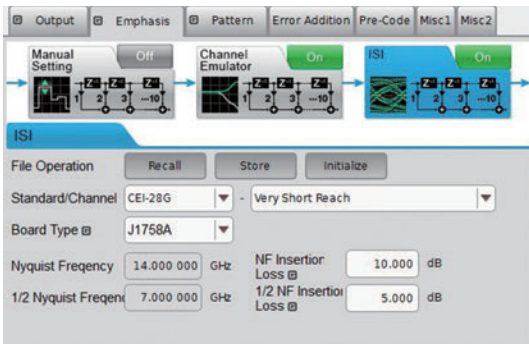
Waveform adjustment using 10Tap Emphasis Function



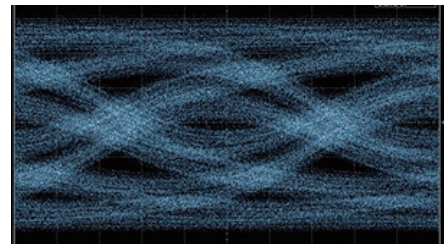
Emphasis Setting Screen Example

Additionally, the Variable ISI (option) can generate a signal with simulated Loss between the Tx and Rx channels of high-speed devices by setting the channel Loss for the frequencies defined in CEI-28 G/25G and the S-parameter information, and can also easily output a Loss-corrected waveforms. As a result, channel-Loss dependent high-speed device performance tests can be run easily with good reproducibility without needing to prototype multiple channel boards, helping cut development time.

\* For Variable ISI (option), use either in combination with ISI Board J1758A (select J1758A) or in combination with external channel board (select Not Specified).



ISI Setting Screen Example

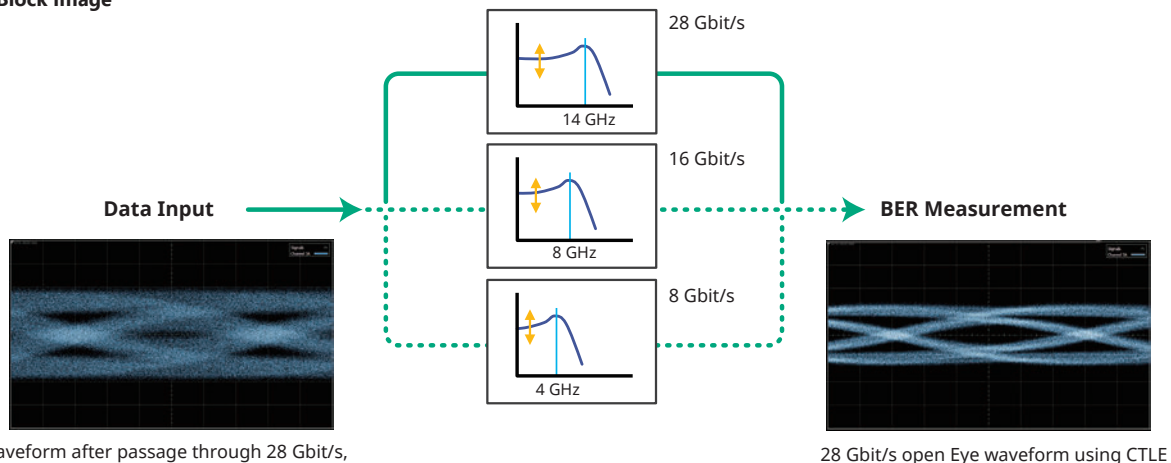


ISI, CEI-28G, 14 dB Loss waveform (typical)

### Multi-band CTLE

Installing the CTLE option supporting multi-band input signals of 28, 16, and 8 Gbit/s at the receive-side of the 21G/32G bit/s SI ED MU195040A permits BER measurements even when the Eye is closed by transmission path losses. Since this CTLE function is a hardware equalizer rather than the software emulator, it supports evaluation of TRX BER performance under near-to-live conditions, such as BER evaluation of test signals, and comparison of DUT BER measurement results.

#### 3-band CTLE Block Image



Waveform after passage through 28 Gbit/s, -10 dB @ 14 GHz channel

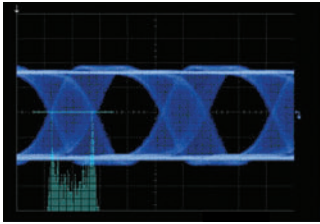
28 Gbit/s open Eye waveform using CTLE



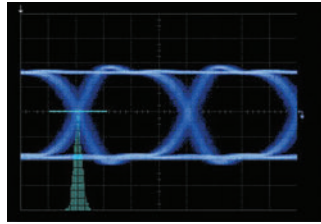
# SI PPG/ED Signal Integrity Evaluation

## Jitter/Noise Addition

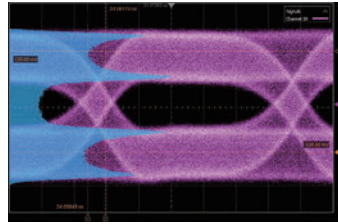
To perform DUT receiver stressed input tolerance tests, the BER is measured under the worst conditions using a stressed signal with added jitter and voltage noise. Using the MP1900A series with the Jitter Modulation Source MU181500B, Jitter Tolerance Test MX183000A-PL001 software, and Noise Generator MU195050A for adding CM/DM/White Noise supports receiver tolerance tests in conformance with the various interface standards. The MP1900A series offers strong support for receiver stressed input tolerance tests by generating high-quality signals before jitter and noise addition as well as for adding high-linearity jitter and noise.



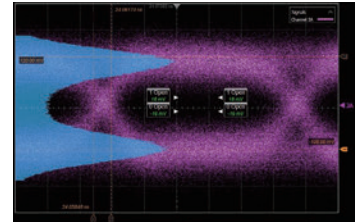
Sinusoidal Jitter (SJ)



Random Jitter (RJ)



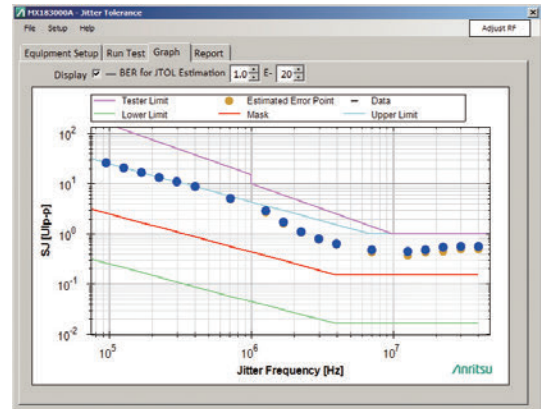
CM/DM Noise



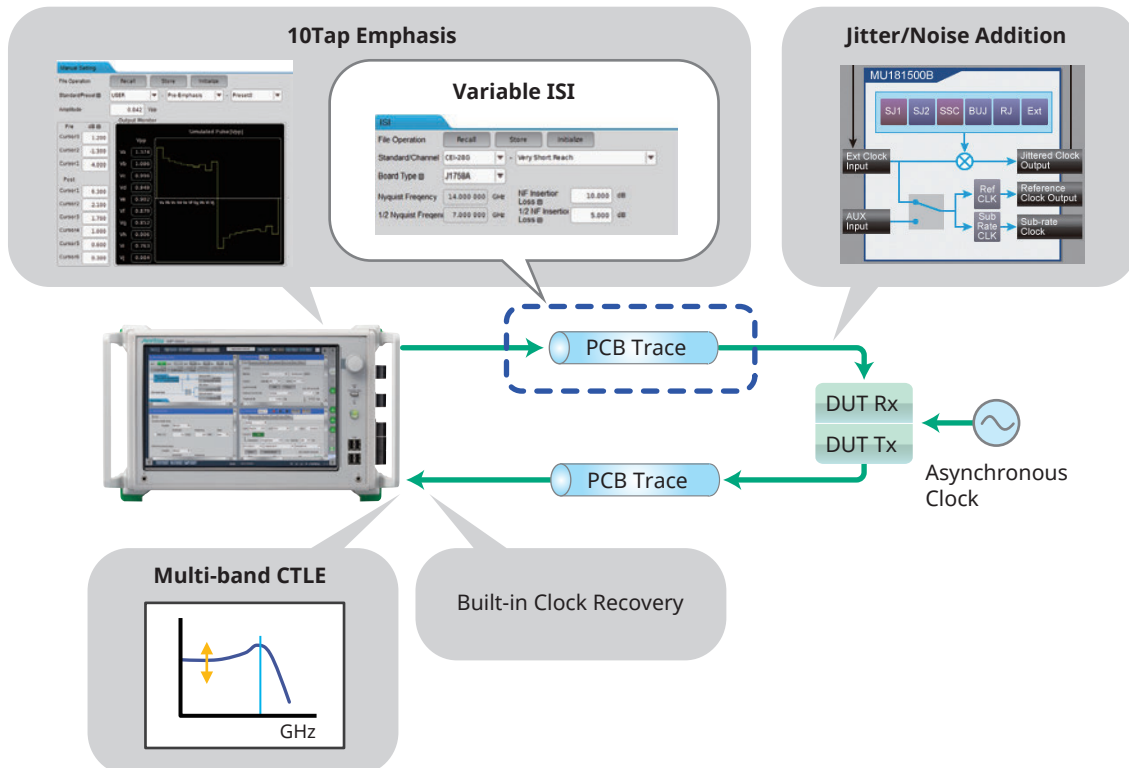
White Noise

## Jitter Tolerance Test Function (MX183000A-PL001)

- High-versatility Jitter Tolerance measurements
- PHY Device Jitter Tolerance tests by impressing SJ/RJ/BUJ
- Standards-compliant Mask measurements
- Fast measurement times using low error rate estimation function, such as 1E-12 and 1E-15
- Tolerance measurements versus device characteristics using four Binary, Upward, Downward, Binary + Linear methods



Low Error Rate Estimation BER Measurements



# SI PPG/ED Link Training

The PCI Express and 10 Gbit/s USB3.2 standards require PHY layer tests such as Jitter Tolerance tests on an established Link to assure interconnectivity between the host and device. Additionally, it is necessary to determine whether the cause is a physical or logical fault at a Link fault.

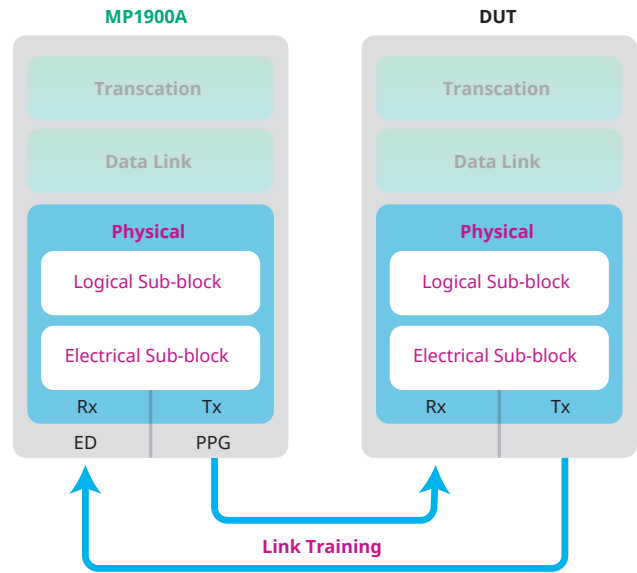
The MP1900A PCI Express/USB functions have Protocol Awareness with a Link Training function required for evaluating the PHY layer as well as an analysis function for detecting each LTSSM state transition to help troubleshoot faults.

These all-in-one functions facilitate efficient PHY layer evaluation of PCIe Gen1 to Gen5\* and USB3.2 receivers through inspection and fault troubleshooting.

Moreover, combination with the Jitter Tolerance Measurement function (MX183000 A-PL001) supports consistent receiver tests of high-speed serial interfaces.

LTSSM: Link Training Status State Machine

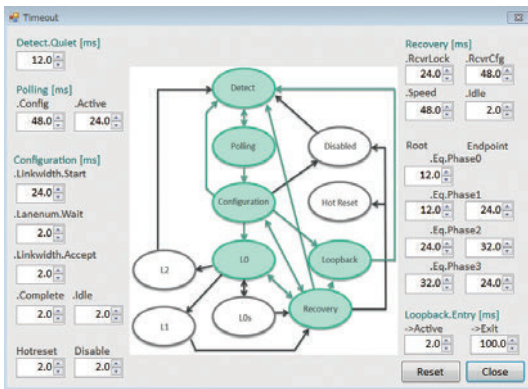
\*: Anritsu is an active member of PCI-SIG and is fully engaged in helping establish new PCI Express specifications. Anritsu provides PCI Express Gen5 pattern generation tools to PCI-SIG members to support future PCIe Gen5 implementation. Contact our sales representative for more details.



Supports physical layer measurements of add-in cards and system boards

- Tx/Rx Link Equalization Response Test
- Rx Link Equalization Test
- Receiver Jitter Tolerance Test

## PCI Express Link Training (MX183000A-PL021)

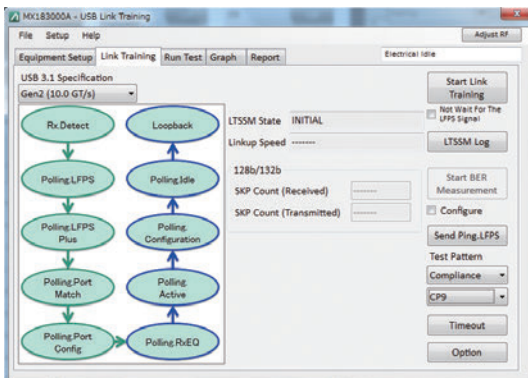


PCIe Link Training State Transition

Time [ns]	ΔTime [ns]	State	Speed[Gt/s]	Detect Preset	Error Count	Uta Preset	Preset	Pre-cut	Cursor	Post-cursor	Detail
0	0	INITIAL	36.0	---	---	---	---	---	---	---	00 00 00 00 70 49 07 00 00 00
13708	13708	DETECT_ACTIVE	36.0	---	---	---	---	---	---	---	00 01 00 04 00 09 17 00 00 00
12017208	12000000	DETECT_ACTIVE	36.0	---	---	---	---	---	---	---	00 02 00 05 44 19 07 00 00 00
12017296	16	POLLING_ACTIVE_S01	36.0	---	---	---	---	---	---	---	00 03 00 05 44 19 07 00 00 00
36017286	24000000	INITIAL	36.0	---	---	---	---	---	---	---	00 00 00 03 3A 0B 07 00 00 00
36017312	16	DETECT_ACTIVE	36.0	---	---	---	---	---	---	---	00 01 00 03 3A 0B 07 00 00 00
40017312	12000000	DETECT_ACTIVE	36.0	---	---	---	---	---	---	---	00 02 00 02 3A 0B 07 00 00 00
40017320	16	POLLING_ACTIVE_S01	36.0	---	---	---	---	---	---	---	00 03 00 02 3A 0B 07 00 00 00
72017320	24000000	INITIAL	36.0	---	---	---	---	---	---	---	00 00 00 07 04 FF 07 00 00 00
72017344	16	DETECT_ACTIVE	36.0	---	---	---	---	---	---	---	00 01 00 07 04 FF 07 00 00 00
84017344	12000000	DETECT_ACTIVE	36.0	---	---	---	---	---	---	---	00 02 00 06 06 51 07 00 00 00
84017360	16	POLLING_ACTIVE_S01	36.0	---	---	---	---	---	---	---	00 03 00 06 06 51 07 00 00 00
100017360	24000000	INITIAL	36.0	---	---	---	---	---	---	---	00 00 00 04 7F 23 07 00 00 00
100017376	16	DETECT_ACTIVE	36.0	---	---	---	---	---	---	---	00 01 00 04 7F 23 07 00 00 00
120017376	12000000	DETECT_ACTIVE	36.0	---	---	---	---	---	---	---	00 02 00 03 43 05 07 00 00 00
120017392	16	POLLING_ACTIVE_S01	36.0	---	---	---	---	---	---	---	00 03 00 03 43 05 07 00 00 00
140017392	24000000	INITIAL	36.0	---	---	---	---	---	---	---	00 00 00 01 24 47 07 00 00 00
140017408	16	DETECT_ACTIVE	36.0	---	---	---	---	---	---	---	00 01 00 01 24 47 07 00 00 00
154017408	12000000	DETECT_ACTIVE	36.0	---	---	---	---	---	---	---	00 02 00 00 DC A8 07 00 00 00
154017424	16	DETECT_ACTIVE	36.0	---	---	---	---	---	---	---	00 03 00 00 DC A8 07 00 00 00
180017424	24000000	INITIAL	36.0	---	---	---	---	---	---	---	00 00 00 00 01 4B 07 00 00 00
180017440	16	DETECT_ACTIVE	36.0	---	---	---	---	---	---	---	00 01 00 00 01 4B 07 00 00 00
192017440	12000000	DETECT_ACTIVE	36.0	---	---	---	---	---	---	---	00 02 00 00 00 03 4D 07 00 00 00
192017456	16	DETECT_ACTIVE	36.0	---	---	---	---	---	---	---	00 03 00 00 00 03 4D 07 00 00 00

LTSSM Log of each LTSSM State Transition

## USB Link Training (MX183000A-PL022)



USB Link Training State Transition

Time [ns]	ΔTime [ns]	State	Speed[Gt/s]	Detail
0	6,945,704	INITIAL	10.0	00 00 00 00 00 00 00 00 00 00
6,945,704	24	DETECT_ACTIVE	10.0	00 02 00 00 00 00 00 00 00 00
6,945,728	69,440	POLLING_LFPS_GCD01	10.0	00 12 00 00 00 00 00 00 00 00
7,015,168	121,888	POLLING_LFPS_PLUS	10.0	00 14 00 00 00 00 00 00 00 00
7,137,032	71,808	POLLING_LFPS_ENDED0	10.0	00 18 00 00 00 00 00 00 00 00
7,206,840	89,048	POLLING_PORT_MATCH	10.0	00 16 00 00 00 00 00 00 00 00
7,297,888	110,080	POLLING_PORT_CONFIG_READY	10.0	00 17 00 00 00 00 00 00 00 00
7,407,968	26,896	POLLING_PORT_ENDELEM0	10.0	00 18 00 00 00 00 00 00 00 00
7,434,860	7,176,248	POLLING_READY	10.0	00 18 00 00 00 00 00 00 00 00
14,612,608	2,176	POLLING_ACTIVE	10.0	00 18 00 00 00 00 00 00 00 00
14,614,784	2,192	POLLING_CONFIGURATION	10.0	00 1C 00 00 00 00 00 00 00 00
14,616,976	24	POLLING_IDLE	10.0	00 10 00 00 00 00 00 00 00 00
14,617,000	0	LOOPBACK_ACTIVE	10.0	00 04 00 00 00 00 00 00 00 00

LTSSM Log of each LTSSM State Transition

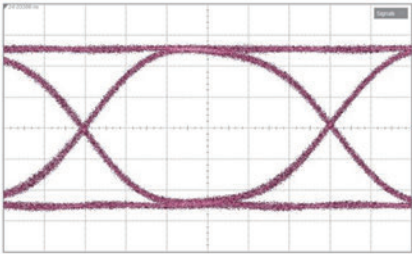
# SI PPG/ED High Waveform Quality and High Sensitivity

## Low-Noise, High-Quality BERT with Low Intrinsic Jitter Output, High Sensitivity and Wideband Input

Assuring DUT design margins has become an important issue as transmission rates have become faster and PAM4 Signal formats have been introduced. Designers require more accurate evaluations to confirm that adequate margins are maintained. As a result, the impact of uncertainty elements, such as noise and Intrinsic Jitter characteristics of measuring instruments, on results can no longer be ignored. These newly developed best-of-class PPG with lowest-level Intrinsic Jitter and high-sensitivity ED can measure DUT guaranteed margins more accurately to help improve R&D efficiency.

## Low Intrinsic Jitter Data Output PPG

The MU195020A PPG has an Intrinsic Jitter of just 115 fs rms.



28.1 Gbit/s PRBS  $2^{31} - 1$   
Typical Output Waveform



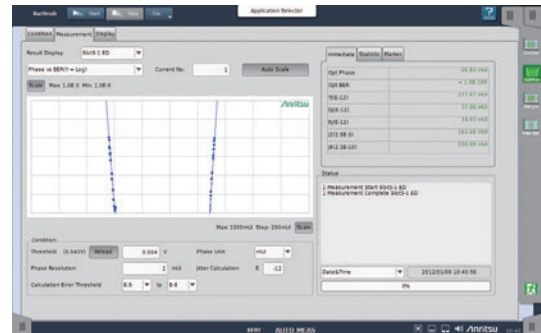
Low intrinsic RJ 115 fs rms

## High-Sensitivity, Wideband Input ED

The assured ED input analog bandwidth is 40 GHz. This bandwidth supports evaluation of Eye margin characteristics with high reproducibility even at input of small signals.



Example of Eye Contour Measurement at Input of Small 50 mVp-p Signal



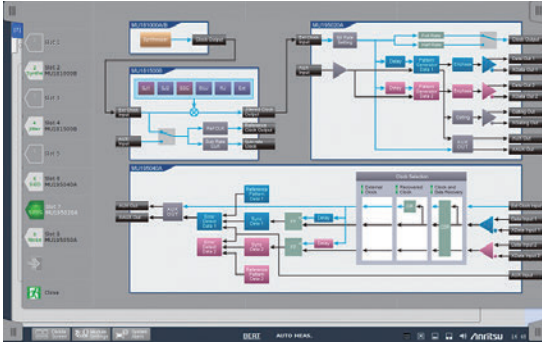
Bathtub Measurement Example

# Easy to Use Operability

## Improved Operability with New System View, User Interface, and Multi-windows

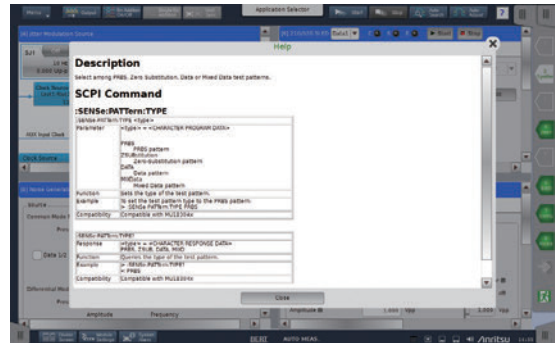
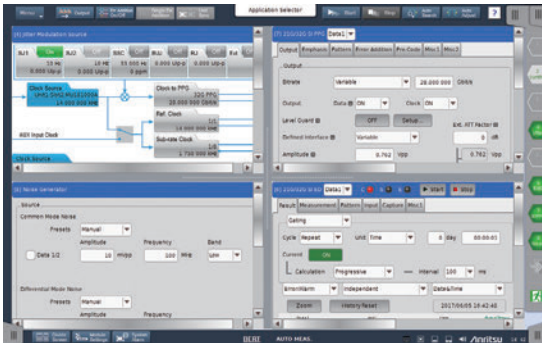
The MP1900A features easy intuitive operability based on a redesigned GUI and large 12.1-inch touch-panel LCD. Fast mistake-free settings help shorten measurement times.

The newly developed system view displays system functions as easy-to-understand blocks, supporting smooth settings and easy operation of each module.



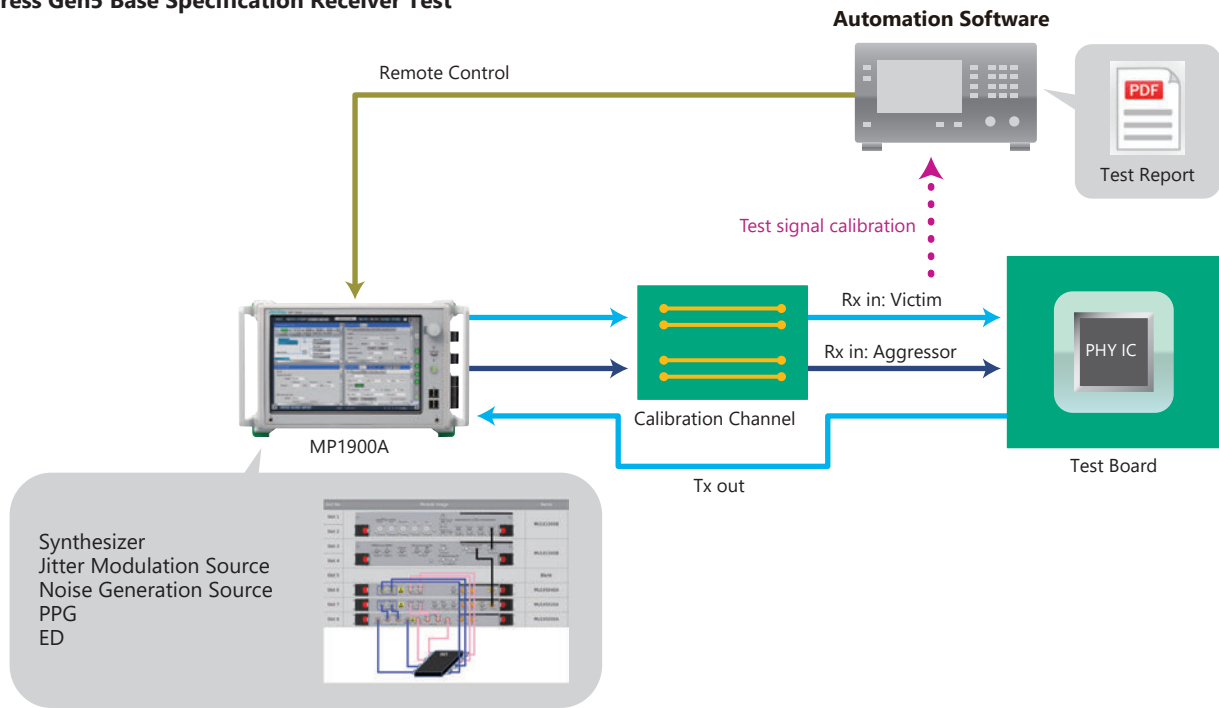
Four split screens help improve the efficiency of multi-channel measurements.

The Help function displays the remote commands corresponding to GUI operations, which simplifies automated system configurations.



# Application Examples

## PCI Express Gen5 Base Specification Receiver Test



### Required Items

- Cross Talk Test
- Jitter Tolerance Test
- Emphasis Effect Validation
- Supports Common/Separate Clock Architecture

### PCI Express Gen5 Base Solution Features

- All-in-One Crosstalk Test using 2ch PPG
- Automatic Calibration using Variable ISI Option Without Changing Calibrated Channel Connection
- True BER Measurement using SKP OS Filtering Function
- Support for All SRIS, SRNS, and Common Clock Architectures

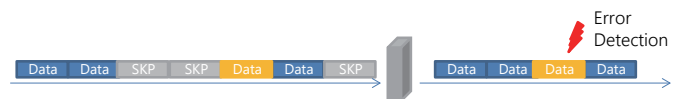
Anritsu supports PCIe standards as an active PCI-SIG member and is working on future support for the PCI Express Gen5 CEM test standard. Contact our business section for more details.

### Crosstalk Test

Crosstalk has a large impact on the integrity of 32 GT/s Gen5 signals. Crosstalk can be evaluated easily with good reproducibility using the 2ch PPG with a high differential amplitude of up to 2.6 Vpp.

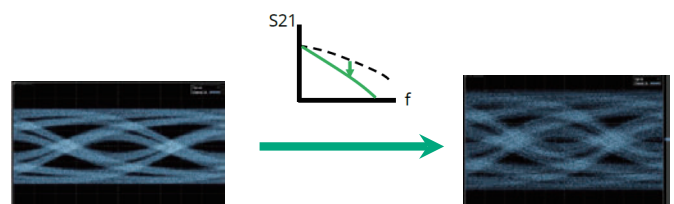
### SKP OS Filtering

The SKIP Symbol used to absorb frequency deviation must be excluded from the target BER measurement. The Error Detector automatically discriminates between Data and SKIP symbols to measure the true BER. This function supports PCIe Gen1 to Gen5.



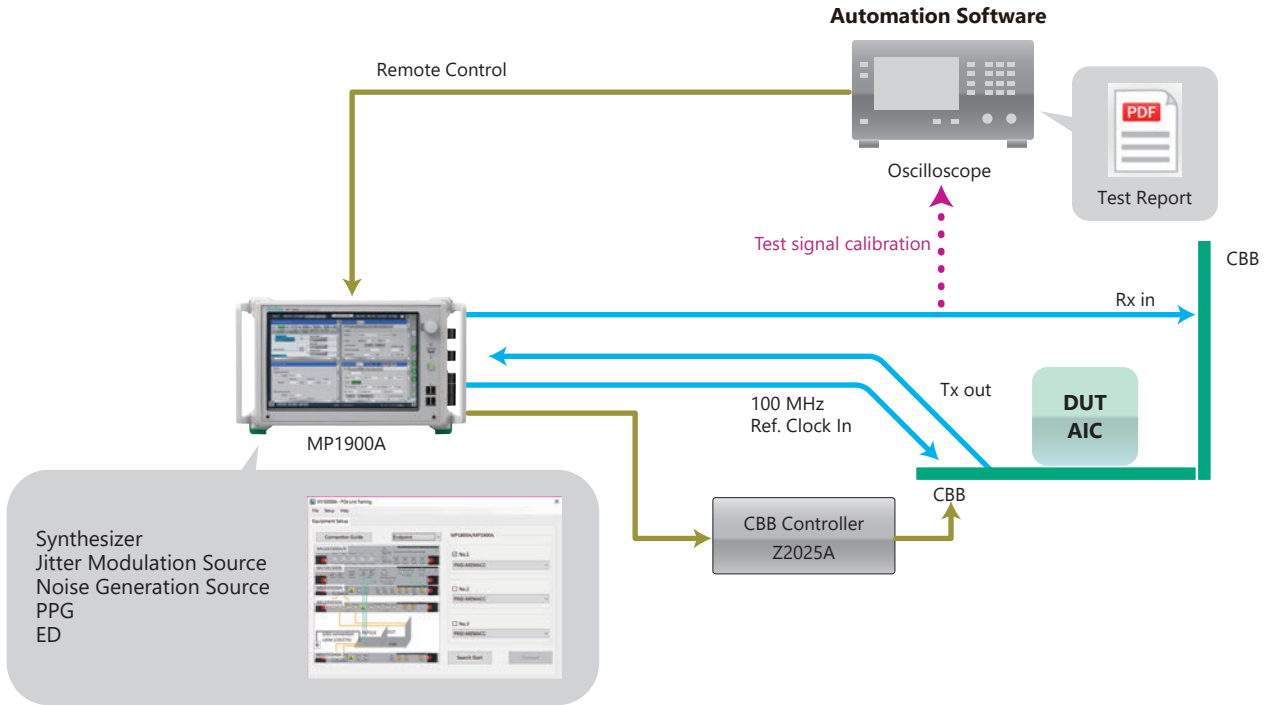
### Variable ISI Function

Calibration can be performed without changing the trace connection by generating a signal simulating channel loss using the Emphasis function supporting up to 10Taps (MU195020A-011, 021 options).



# Application Examples

## PCIe Gen4/5 Receiver Test



### Required Items

- Link Training function
- Jitter Tolerance Test
- Emphasis Effect Validation
- Supports Common/Separate Clock Architecture

## PCI Express Evaluation Solution Features

- All-in-one support for Protocol Awareness PCIe Gen1 to Gen5 receiver tests
- Event Trigger Function for Tx/Rx Link Equalization Test
- 2.4 Gbit/s to 32.1 Gbit/s high-speed BERT
- Low-intrinsic-jitter and high-quality output waveform, high-sensitivity ED
- Link Training, Link Equalization and LTSSM analysis functions
- 10Tap Emphasis function
- 12 dB CTLE and Clock Recovery functions
- CMI and DMI Noise addition, and SJ, RJ, BUJ, and SSC Jitter Addition functions
- Thunderbolt 3, USB3.2/4, PCI Express Gen5 support
- Full automation including CBB control

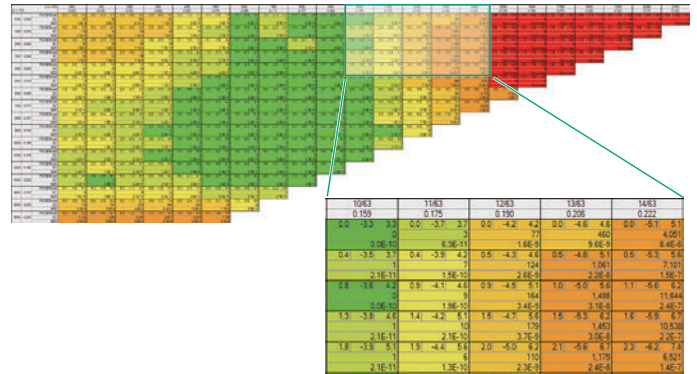
## PCIe CBB Controller Z2025A

The DUT must be reset and transitioned to the Initial state before starting Link Training.

The PCIe CBB Controller Z2025A fully automates control of Rx LEQ and Tx LEQ using the Power Reset and Power Cycle control pins implemented by PCIe CBB 4.0 (Compliance Base Board 4.0).

## Matrix Scan Function

To secure high-quality communications with the Link partner, the best combination of the Tx-side EQ and Rx-side EQ must be selected. The Matrix scan function scans for the best Tx EQ setting at the receiver to find the best setting automatically at the receiver.

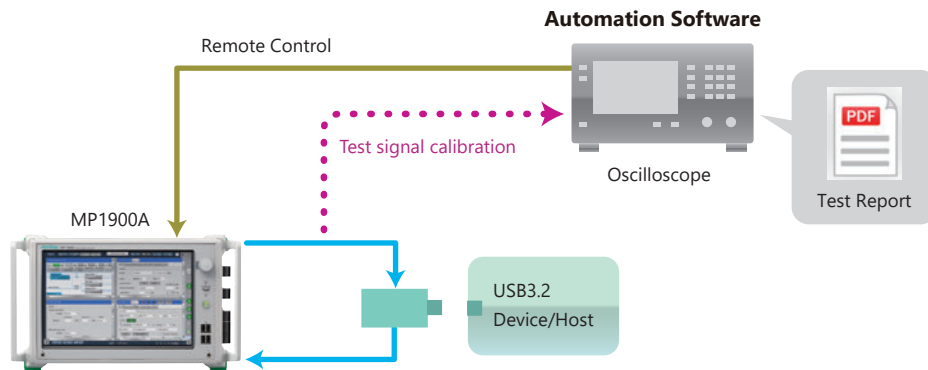


## Link Training Function

The PCI Express receiver test requires establishment of the Link status using LTSSM before performing the DUT BER test. Installing the PCIe Link Training MX183000A-PL021 option in the MP1900A supports verification of the Link status required for measurement. Additionally, the PCIe Link Training option has an LTSSM Analysis function for troubleshooting problems the Link status cannot be configured.

# Application Examples

## USB Receiver Test



### Required Functions

- Loopback State Setting Function
- Jitter Tolerance Function
- Automatic Receiver Test Function
- Link Training Function

### Link Training Function

The Link status required for measurement can be configured automatically using the MX183000A and options.

- The test mode can be transitioned to the Loopback mode required for evaluating USB3.2 Gen1 and Gen2 devices.

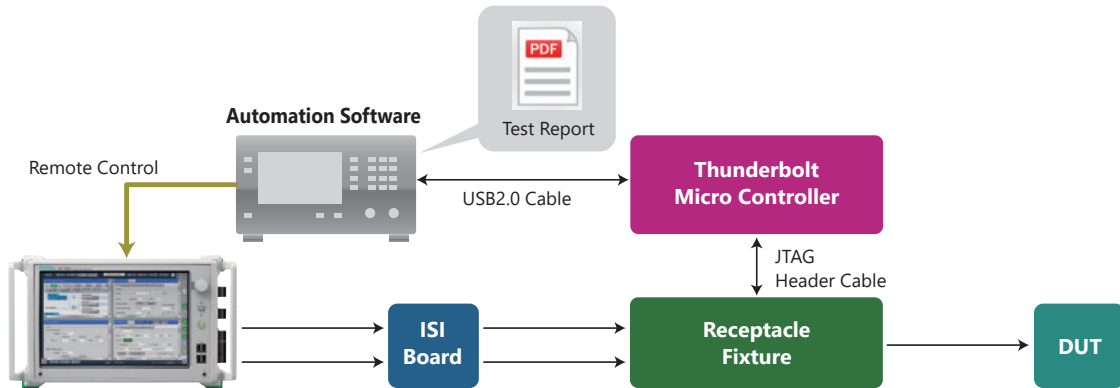
Additionally, the Link Training option (MX183000A-PL022) has an LTSSM Analysis function for troubleshooting problems the Link status cannot be configured.

### Receiver Jitter Tolerance Test

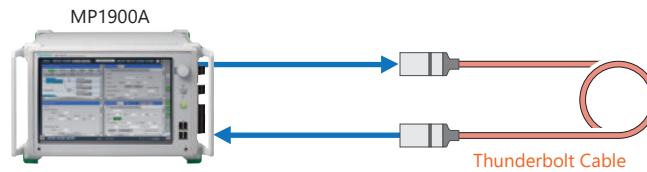
Jitter Tolerance tests can be automated using the MX183000A-PL001 software to help shorten the design validation time.

# Application Examples

## Thunderbolt Receiver Test



## Thunderbolt Cable Evaluation Setup



### Required Functions

- 20 Gbit/s PPG
- Stressed Signal Calibration Function
- Jitter Tolerance Function

### Supports Thunderbolt 3

Supports Thunderbolt 3 specified bit rates (20G)

### Stressed Signal Calibration

GRL Automation Software supports automatic stressed signal calibration as specified by Thunderbolt 3 (USB Type-C Thunderbolt Alternate Mode Electrical Host/Device Compliance Test Specification).

### Stressed Signal Input Test

- Supports Rx BER measurements required by Host/Device compliance test
- Supports automatic Rx test using Tenlira scripts
- Supports automatic Pass/Fail measurement for Rx stressed signal tests

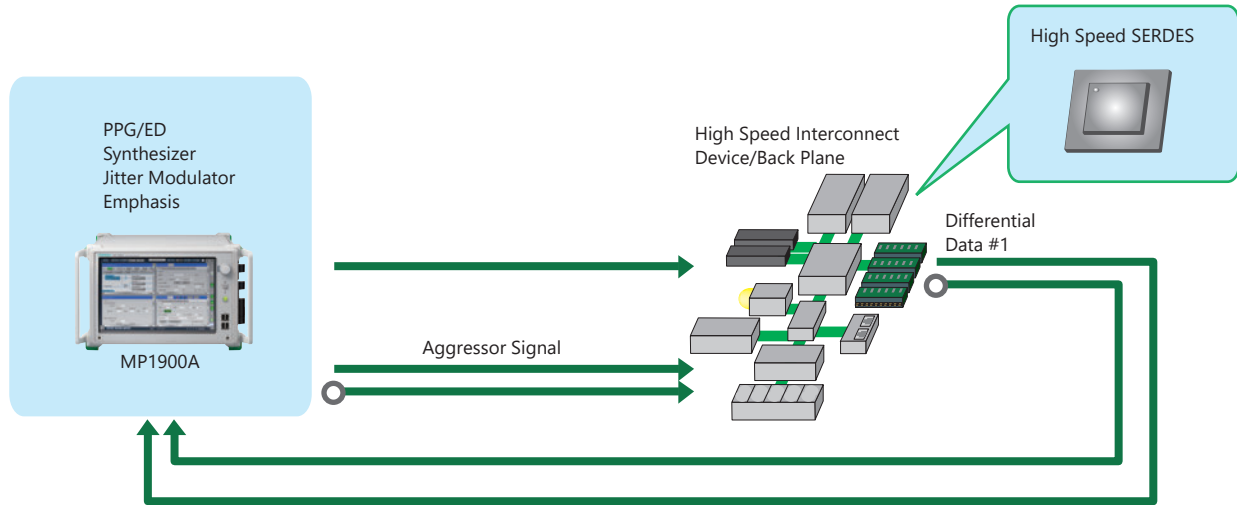
### Receiver Test

Calibration and the Jitter Tolerance test can both be automated using the GRL-TBT3-RXA software. Automation helps cut design verification times.



# Application Examples

## High-speed Interconnect Evaluation



### Required Test Items

- 32.1 Gbit/s Multi-channel signal generation
- Jitter Tolerance test
- Emphasis efficiency check
- Crosstalk test

### Multi-channel

Along with support for multi-channels, the bit rate of devices such as back planes of high-performance servers is becoming increasingly faster. The MP1900A supports generating both the Victim signal with controlling Emphasis and the Aggressor signal for crosstalk testing simultaneously. The MP1900A offers multi-channel measurements for TRx devices such as Transceiver, SERDES and Clock Data Recovery (CDR).

### Skew and Crosstalk Effect Check

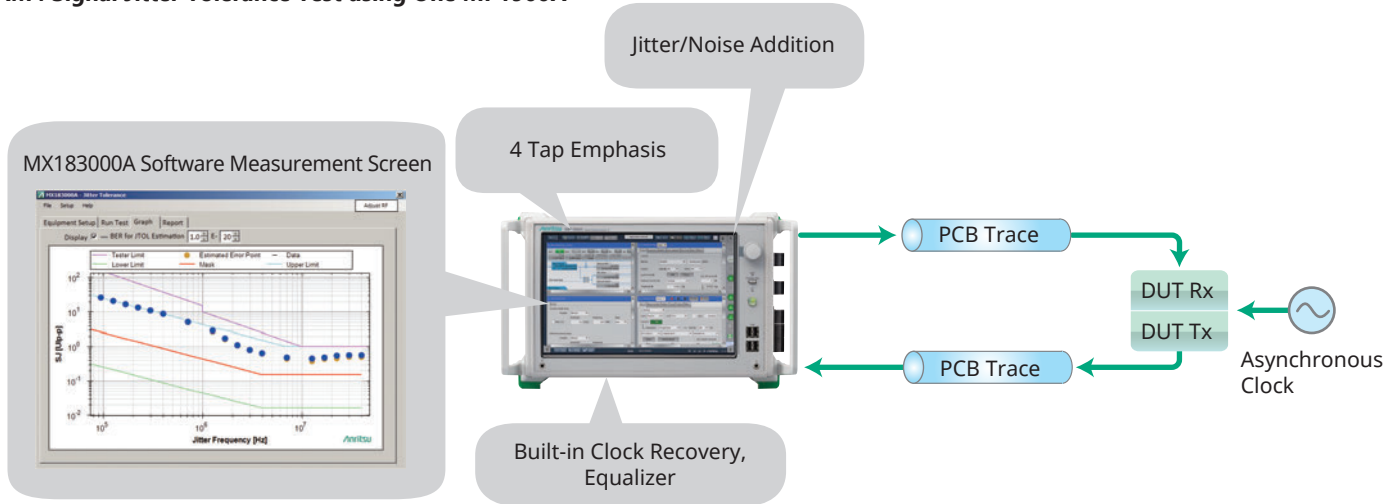
Processing high speed digital signals requires both logic tests and actual equipment tests. The MP1900A supports both pattern synchronization and phase adjustment functions, permitting easy tests of Rx device skew tolerance and crosstalk effects.

### Jitter Tolerance Test

Jitter Tolerance tests supporting various standards can be run by simultaneously impressing SJ (2 tone), RJ, BUJ, and SSC up to 32.1 Gbit/s using the MX183000A-PL001 and MU185000B Jitter modulation sources. The Eye opening of signals passing through the back-plane is degraded by loss in the board traces.

# Application Examples

## PAM4 Signal Jitter Tolerance Test using One MP1900A



### Required Items

- PAM4 BER measurement
- Jitter Tolerance Test

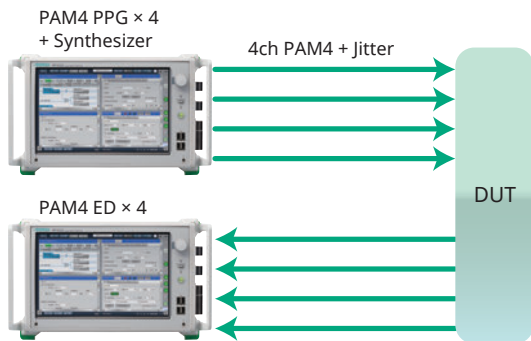
### BER Measurements of 64-Gbaud PAM4 Signals

BER measurements can be performed in real-time using the PAM4 PPG and ED modules with no need for other external equipment\*.

- World-first, all-in-one solution requiring no other external equipment
- Module with built-in clock recovery, equalizer
- Wide-range Emphasis function
- High-sensitivity data input
- Symbol BER evaluation

### Jitter Tolerance Test

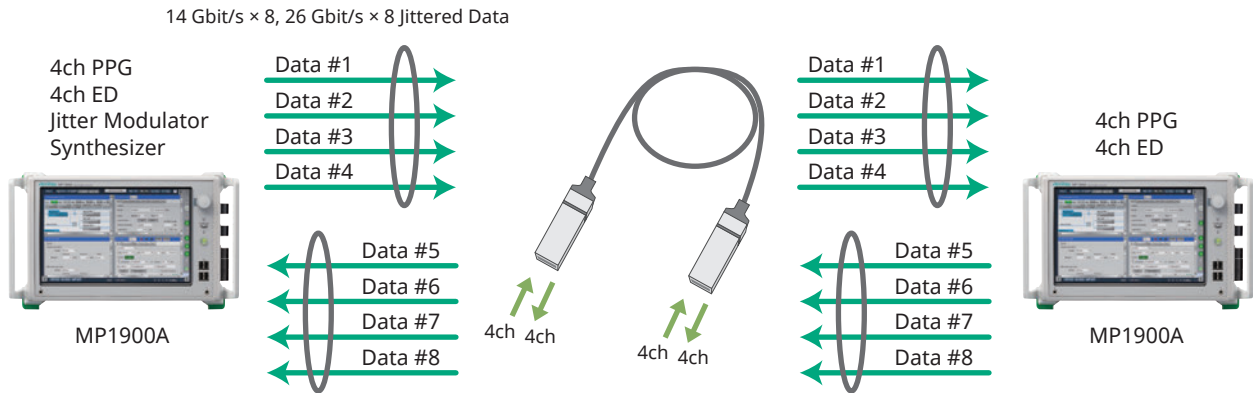
Testing the DUT receiver input stress tolerance requires BER measurements under severe conditions using a stressed signal with added jitter and noise. The all-in-one MP1900A series supports receiver stress tests for various interface specifications using the Jitter Modulation Source MU181500B for adding SJ, RJ, BUJ, and SSC simultaneously, the Jitter Tolerance Test MX183000A-PL001 software, and the Noise Generator MU195050A for adding CM/DM/White voltage noise. The MP1900A series provides strong support for high-quality signals prior to jitter and noise addition, as well as receiver stressed-signal tolerance tests using high-linearity jitter and noise addition functions.



\*: Refer to the 32G/64G NRZ/PAM4 Signal Integrity Test Solution Catalog (MP1900A\_64G-E-A-1) for details of PAM4 PPG/ED.

# Application Examples

## InfiniBand EDR (25.78G) AOC Evaluation



### Required Test Items

- 8ch (4ch two ways) simultaneous BER measurement
- Crosstalk Test
- Jitter Tolerance Test
- Bathtub Jitter and Eye Diagram Analysis

### 8ch (4ch two ways) Simultaneous BER Measurement

QSFP Active Optical Cables (AOC) used by InfiniBand, etc., perform simultaneous transmission over a total of 8 channels using two-way transmissions over 4 channels. The MP1900A incorporates 8 channels (8ch PPG + 8ch ED) simultaneously in one main unit and can measure all channels at one time, offering excellent performance and shorter measurement times. Moreover, InfiniBand HDR measurement is also supported using PAM signals.

### Jitter Tolerance Test

AOCs in data centers are using low input and output amplitude levels to cut power consumption costs, making it important to assure interconnectivity. With its high sensitivity data input and CTLE, the MU195040A supports reception of low-amplitude, low-Eye-opening Data signals and perform high-reproducibility DUT Jitter Tolerance tests.

### Crosstalk Effect Confirmation

Implementing 20 Gbit/s class transmissions not only requires logic tests but also requires actual equipment verification tests. Since the MP1900A has both pattern synchronization and independent phase tuning for each channel, tests on items such as the effect of AOC crosstalk are implemented easily.

### Bathtub Jitter and Eye Diagram Analysis

Bathtub Jitter Analysis (separate TJ, RJ, DJ) is supported by the built-in as standard Clock Delay function. Low bit error rates, such as 1E-12 and 1E-15, can also be estimated quickly from the change in bit error rate versus phase.

# Automation Software Selection Guide

The following table lists the software products supporting each Compliance Test item.

\* Please enquire about supported realtime oscilloscope models.

## PCIe

Specification	Compliance Test Item	Supported Software	
		Teledyne LeCroy	GRL
Base Specification	Receiver Link Equalization	QPHY-PCIE5-Tx-Rx*	GRL-PCIE4-BASE-RXA GRL-PCIE5-BASE-RXA
CEM	Specification Transmitter Signal Quality	QPHY-PCIE4-Tx-Rx	GRL-PCIE34-TXP1
	Transmitter Pulse Width Jitter		
	Transmitter Preset		
	Transmitter initial Tx Equalization		GRL-PCIE4-CEM-RXA
	Transmitter Link Equalization response		
	Receiver Link Equalization		
	PLL Bandwidth		

\*: Supports Gen3 to Gen5

## USB

Compliance Test Item	Supported Software	
	Teledyne LeCroy	GRL
Transmitted Eye Test	QPHY-USB3.2-Tx-Rx	—
Receiver Jitter Tolerance Test		GRL-USB31-RX/A

## Thunderbolt

Test Item	Supported Software
	GRL
Receiver Test	GRL-TBT3-RX/A
SJ Margin Test	
Amplitude Margin Test	

## SI PPG/ED Selection Guide

Category	Model/Name	21G or 32.1G 1ch BERT	32G Interconnects, Signal Integrity/ Measurement	PCI Express Gen3/4/5*1 Base spec, CEM	USB3.2 Rx Test	Thunderbolt RX Test	100 GbE 4ch Backplanes/ AOC
Main Frame	MP1900A Signal Quality Analyzer-R	1	1	1	1	1	2
Synthesizer	MU181000B 12.5 GHz 4 Port Synthesizer	1	1	1	1	1	1
	MU181000B-001 Jitter Modulation Source						
	MU181000B-002 SSC Extension			1			
Jitter Modulation	MU181500B Jitter Modulation Source		1	1	1	1	1
21G/32G PPG	MU195020A 21G/32G bit/s SI PPG	1	1	1	1	1	2
	MU195020A-001 32G bit/s Extension	(1)	1	1*2			2
	MU195020A-010 1ch Data Output	1	1	1	1	1	
	MU195020A-020 2ch Data Output			1*3			2
	MU195020A-011 1ch 10Tap Emphasis		1	1	1	1	
	MU195020A-021 2ch 10Tap Emphasis			1*3			2
	MU195020A-030 1ch Data Delay						
	MU195020A-031 2ch Data Delay			1*3			2
	MU195020A-040 1ch Variable ISI		1	1*4			
	MU195020A-041 2ch Variable ISI			1*4			2
	21G/32G ED	MU195040A 21G/32G bit/s SI ED	1	1	1	1	
MU195040A-001 32G bit/s Extension		(1)	1	1*2			2
MU195040A-010 1ch ED		1	1	1	1		
MU195040A-020 2ch ED							2
MU195040A-011 1ch CTLE			1	1	1		
MU195040A-021 2ch CTLE							2
MU195040A-022 Clock Recovery			1	1	1		2
Voltage Noise	MU195050A Noise Generator		1	1	1*5	1	2
	MU195050A-001 White Noise						2
Software	MX183000A-PL001 Jitter Tolerance Test		1	1	1		1
	MX183000A-PL021 PCIe Link Training			1*6			
	MX183000A-PL022 USB Link Training				1		

\*1: Anritsu is an active member of PCI-SIG and is fully engaged in helping establish new PCI Express specifications.

Anritsu supports Gen5 CEM Test future. Contact our sales representative for more details.

\*2: Required for PCI Gen5 support.

\*3: Required for Crosstalk test.

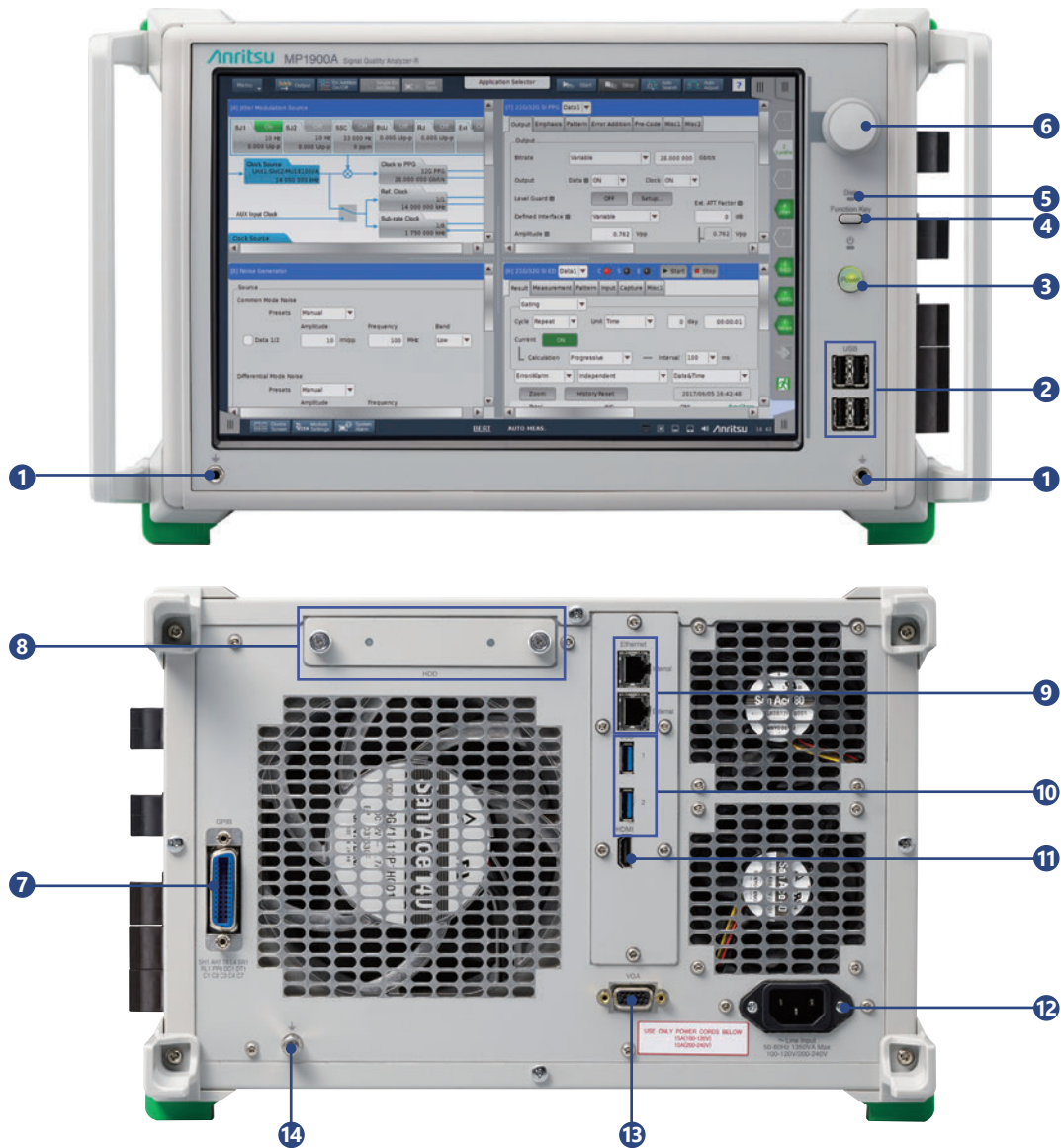
\*4: Supports Gen5 Base Rx test.

\*5: Not required when using Pick Off Tee J1510A (2 pcs).

\*6: Supports Gen1 to Gen4.

# Signal Quality Analyzer-R MP1900A Panel Layout

## Front/Rear Panel

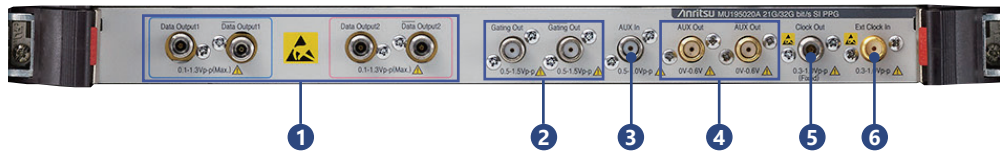


- 1 Ground Jack**  
Wrist strap to discharge static electricity
- 2 USB Port**  
Four USB2 ports for connecting peripherals
- 3 Power Switch**  
Switches power on and off; Standby LED over power switch lights when power cord connected and Power switch set to off
- 4 Function Keys**  
Keys for defining functions using software
- 5 HDD Access LED**  
Lamp that lights during access to built-in HDD
- 6 Rotary Encoder**  
Switch to increase/decrease numeric values by turning knob
- 7 GPIB**  
GPIB Connector
- 8 HDD**  
Slot for secondary 2.5" HDD
- 9 Ethernet Connector**  
External: For Remote Control  
(Internal: Reserved for future function expansion)
- 10 USB Port**  
Two USB3.0 ports for peripherals
- 11 HDMI**  
HDMI connector for displaying screens on external screen
- 12 Power Inlet**  
Socket for connecting 3-pole power cord to supply 100 V(ac) to 12 V(ac) or 200 V(ac) to 240 V(ac) power
- 13 VGA**  
VGA connector for displaying screens on external screen
- 14 Frame Ground Terminal**  
Terminal for discharging electrostatic charges; connect DUT and common ground using ground strap

# Signal Quality Analyzer-R MP1900A Panel Layout

## Modules

### 21G/32G bit/s SI PPG MU195020A



**1 Data Output, Data Output**

Connectors outputting differential Data and  $\overline{\text{Data}}$  signals

**2 Gating Out, Gating Out**

Repeat: Timing signal output

Burst: Timing signal output used at Burst

**3 Aux In**

Auxiliary signal input connector

Either Error Injection or Burst can be selected.

**4 Aux Out, Aux Out**

Auxiliary signal output connectors

Output of any of 1/N Clock, Pattern Sync, and Burst2 can be selected.

**5 Clock Out**

Clock signal output connector

**6 Ext Clock In**

Clock signal input connector

### 21G/32G bit/s SI ED MU195040A



**1 Data Input, Data Input**

Input connectors for Data and  $\overline{\text{Data}}$  signals

Supports both differential and single inputs

When the Clock Recovery MU195040A-x22 is installed, the clock is recovered from the signal input to Data Input1.

**2 Aux In**

Auxiliary signal input connector

Any of External Mask, Burst, and Capture External Trigger can be selected.

**3 Aux Out, Aux Out**

Auxiliary signal output connectors

Any of 1/N Clock, Pattern Sync, Error, Sync Gain can be output.

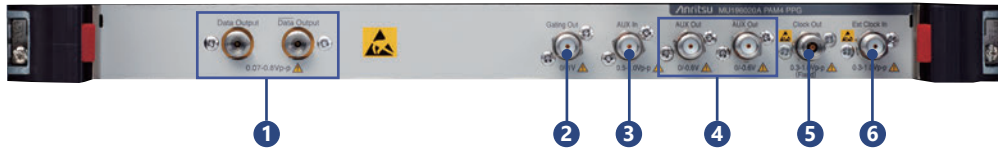
**4 Ext Clock In**

Clock signal input connector

# Signal Quality Analyzer-R MP1900A Panel Layout

## Modules

### PAM4 PPG MU196020A



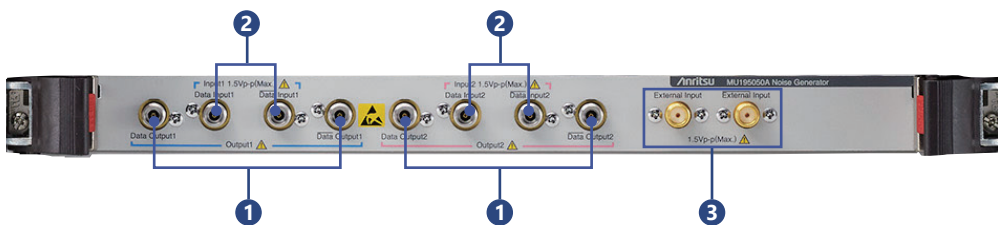
- 1 Data Output, Data Output**  
Connectors outputting differential Data and  $\overline{\text{Data}}$  signals
- 2 Gating Out**  
Repeat: Timing signal output  
Burst: Timing signal output used at Burst
- 3 Aux In**  
Auxiliary signal input connector  
Either Error Injection or Burst can be selected.
- 4 Aux Out, Aux Out**  
Auxiliary signal output connectors  
Output of any of 1/N Clock, Pattern Sync, and Burst2 can be selected.
- 5 Clock Out**  
Clock signal output connector
- 6 Ext Clock In**  
Clock signal input connector

### PAM4 ED MU196040B



- 1 Data Input, Data Input**  
Input connectors for Data and  $\overline{\text{Data}}$  signals  
Supports both differential and single inputs
- 2 Aux In**  
Auxiliary signal input connector  
Any of External Mask, Burst, and Capture External Trigger can be selected.
- 3 Aux Out, Aux Out**  
Auxiliary signal output connectors  
Any of 1/N Clock, Pattern Sync, Error, Sync Gain can be output.
- 4 Ext Clock In**  
Clock signal input connector

### Noise Generator MU195050A



- 1 Data Output, Data Output**  
Connector for outputting differential Data and  $\overline{\text{Data}}$  Signal with added noise
- 2 Data Input, Data Input**  
Connector for inputting Data and Data signal with added noise
- 3 External Input, External Input**  
External noise input connectors

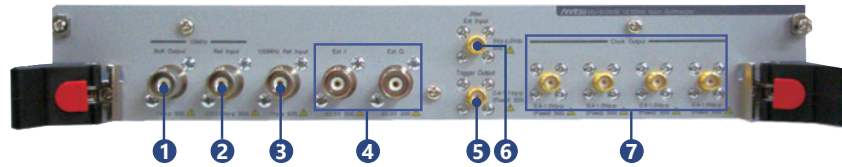
\* Input2 and Output2 are not used by the MU196020A



# Signal Quality Analyzer-R MP1900A Panel Layout

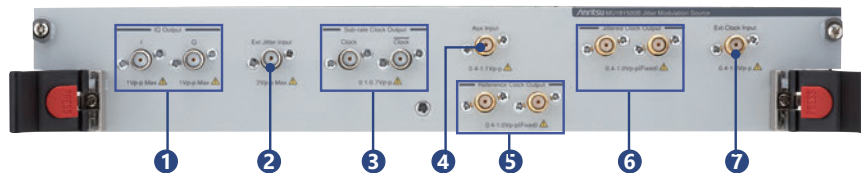
## Modules

### 12.5 GHz 4port Synthesizer MU181000B



- 1 10 MHz Buff Output**  
Output 10 MHz clock for reference
  - 2 10 MHz Ref Input**  
Inputs 10 MHz clock for reference
  - 3 100 MHz Ref Input<sup>\*1</sup>**  
Inputs 100 MHz clock for reference
  - 4 Ext I, Q<sup>\*2</sup>**  
Inputs I, Q signals
  - 5 Trigger Output<sup>\*2</sup>**  
Outputs 1/1 or 1/64 clock frequency
  - 6 Jitter Ext Input<sup>\*2</sup>**  
Inputs modulation signal source
  - 7 Clock Output 1 to 4**  
Outputs clocks
- <sup>\*1</sup>: Only when Jitter Modulation Option (MU181000B-001) or SSC Extension (MU181000B-002) installed  
<sup>\*2</sup>: Only when Jitter Modulation Option installed (MU181000B-001)

### Jitter Modulation Source MU181500B



- 1 IQ Output**  
Outputs IQ signal
- 2 Ext Jitter Input**  
Inputs Jitter Modulation Source
- 3 Sub-rate Clock Output**  
Differential Clock Output signal generated from 1/8 to 1/256-divided Clock Output based on any of following Clock inputs  
• Ext Clock Input • Aux Input
- 4 Aux Input**  
Inputs clock signal
- 5 Reference Clock Output**  
Dual-system Clock Output signal generated from either 1/1, 1/2, or 1/4-divided Jitter Clock Output based on any of following Clock inputs  
• Ext Clock Input • Aux Input
- 6 Jittered Clock Output**  
Two outputs jitter modulated clock signal
- 7 Ext Clock Input**  
Inputs external clock

### 28G/32G bit/s PPG (1ch or 2ch) MU183020A



- 1 Data1/Data1 Output<sup>\*3</sup>**  
Output for 1ch differential data signal
  - 2 Data2/Data2 Output<sup>\*4</sup>**  
Output for 2ch differential data signal
  - 3 Gating Output**  
Output for burst timing signal
  - 4 Aux Input**  
Input for auxiliary signal
  - 5 Aux/Aux Output**  
Output for differential auxiliary signal
  - 6 Clock Output**  
Output for clock signal
  - 7 Ext Clock Input**  
Input for external clock signal
- <sup>\*3</sup>: Data/Data when 1ch option was selected.  
<sup>\*4</sup>: Not implemented when 1ch option was selected.

### 28G/32G bit/s High Sensitivity ED (1ch or 2ch) MU183040B



- 1 Data1/Data1 Input<sup>\*5</sup>**  
Input for 1ch differential data signal
  - 2 Data2/Data2 Input<sup>\*6</sup>**  
Input for 2ch differential data signal
  - 3 Aux Input**  
Input for auxiliary signal
  - 4 Aux/Aux Output**  
Output for differential auxiliary signal
  - 5 Ext Clock Input**  
Input for external clock signal
- <sup>\*5</sup>: Data/Data when 1ch option was selected.  
<sup>\*6</sup>: Not implemented when 1ch option was selected.

# Signal Quality Analyzer-R MP1900A Specifications

Refer to the MP1900A Data Sheet for detailed specifications.

## Signal Quality Analyzer-R MP1900A

LCD	12.1" WXGA 1280 × 800	
Remote Interface	GPIB, LAN	
Module Slots	8	
External Equipment Interface	USB × 6, VGA × 1, HDMI × 1	
OS	Window Embedded Standard 7	
Power Supply	100 V(ac) to 120 V(ac), 200 V(ac) to 240 V(ac), 50 Hz to 60 Hz Power consumption: 1350 VA max.	
Dimensions and Mass	340 (W) × 222.5 (H) × 451 (D) mm, 20 kg (excluding modules)	
CE	EMC	2014/30/EU, EN61326-1, EN61000-3-2
	LVD	2014/35/EU, EN61010-1
	RoHS	2011/65/EU, EN50581

## 12.5 GHz 4 Port Synthesizer MU181000B

Clock Output	Number of Output: 4 Frequency Range: 0.1 GHz to 12.5 GHz, Steps: 1 kHz/1 MHz Level: 0.4 Vp-p to 1 Vp-p (AC) Connector: SMA (f), Termination: 50Ω/GND
10 MHz Input	Frequency: 10 MHz ± 10 ppm Level: 0.5 Vp-p to 2.0 Vp-p Connector: BNC, Termination: 50Ω/GND
10 MHz Output	Level: 1.0 Vp-p ± 30% (AC) Connector: BNC, Termination: 50Ω/GND
100 MHz Reference Signal Input (SSC Extension MU181000B-002)	Outputs either 100 MHz with phase deviation x25, x50, or x80 frequency-multiplied clock from Clock Output connector Supports PCI Express Host Refclk input Modulation Frequency: 30 kHz to 33 kHz Level: 0.15 Vp-p to 1.3 Vp-p (AC) Connector: BNC

## Jitter Modulation Source MU181500B

External Clock Input	Frequency Range: 0.800 000 GHz to 15.000 000 GHz Amplitude: 0.4 Vp-p to 1.0 Vp-p Connector: SMA (f), Termination: 50Ω/AC Coupling
Jittered Clock Output	Number of Output: 2 Amplitude: 0.4 Vp-p to 1.0 Vp-p Connector: SMA (f), Termination: 50Ω/AC Coupling
SJ1	Modulation Frequency: 10 Hz to 250 MHz Amplitude: 0 to 2000 UI @ Modulation Frequency 10 kHz to 100 kHz 0 to 1 UI @ Modulation Frequency 10 MHz to 250 MHz (Different depending on the operating bit rate)
Built-in SJ2	Modulation Frequency: 33 kHz, 87 MHz, 100 MHz, 210 MHz
Spread Spectrum Clocking (SSC)	Modulation Frequency: 28 kHz to 37 kHz Deviation: 0 to 7000 ppm
Random Jitter (RJ)	Bandwidth: 10 kHz to 1 GHz Amplitude: 0 to 0.5 UI (Different depending on the operating frequency)
Bounded Uncorrelated Jitter (BUJ)	PRBS Pattern Length: $2^n - 1$ (n = 7, 9, 11, 15, 23, or 31) BUJ Rate: 0.1 Gbit/s to 3.2 Gbit/s, 4.9 Gbit/s to 6.25 Gbit/s, 9.8 Gbit/s to 12.5 Gbit/s Filter Type (LPF 3 dB Bandwidth): 50, 100, 200, 300, 500 MHz, Through Amplitude: 0 to 0.5 UI (Different depending on the operating frequency)
External Jitter	Bandwidth: 10 kHz to 1 GHz

## Noise Generator MU195050A

Number of Channels	2
Insertion Loss	-3 dB
CMI: Common Mode Noise	0.1 GHz to 6 GHz: Sinusoidal wave
DMI: Differential Mode Noise	2 GHz to 10 GHz: Sinusoidal wave
White Noise	10 MHz to 10 GHz
Crest Factor	>5

# Signal Quality Analyzer-R MP1900A Specifications

## 21G/32G bit/s SI PPG MU195020A

Operation Rate (NRZ)	2.4 Gbit/s to 21 Gbit/s or 32.1 Gbit/s
Number of Channels	1 or 2
Output Amplitude	0.1 Vp-p to 1.3 Vp-p (Single-end) 0.2 Vp-p to 2.6 Vp-p (Differential)
Emphasis	10Tap
Channel Emulator	Normal: Emulates Insertion Loss using S-parameter data Inverse: Performs De-Emphasis compensation for S-parameter Insertion Loss S-Parameter file: S2P,S4P
ISI	Emulates ISI output using CEI-28G/25G Nyquist frequency loss setting Supports loss control in combination with ISI Board J1758A accessory Insertion Loss setting: 1.5 to 25 dB, 0.01 dB step, Nyquist frequency 0 to 25 dB, 0.01 dB step, 1/2 Nyquist frequency
Tr/Tf (20 to 80%)	12 ps (typ.)
Random Jitter	115 fs rms (typ.)
PCIe, USB Link Training	Supported (MX183000A-PL021, MX183000A-PL022)
Output Connector	K (f)

## 21G/32G bit/s SI ED MU195040A

Operation Rate (NRZ)	2.4 Gbit/s to 21 Gbit/s or 32.1 Gbit/s
Number of Channels	1 or 2
Input Attitude	0.05 Vp-p to 1.0 Vp-p (Single-End) 0.1 Vp-p to 2.0 Vp-p (Differential)
Input Sensitivity (Eye Height)	15 mV (28.1 Gbit/s, NRZ) 30 mV/Eye (28.1 Gbaud, PRBS15, PAM4)
CTLE	Peak Frequency: 14, 8, 4 GHz Gain: 0 to -12 dB
Clock Recovery	Yes, supports SSC
PCIe, USB Link Training	Supported (MX183000A-PL021, MX183000A-PL022)
Input Connector	K (f)

## PAM4 PPG MU196020A

Operation Rate (PAM4/NRZ)	2.4 Gbaud to 32.1/58.2/64.2 Gbaud (option selection)
No. of Channels	1
Output Amplitude	70 mVp-p to 800 mVp-p (Single-end) 140 mVp-p to 1600 mVp-p (Differential)
Offset	-2 V to +3.3 V
Emphasis	4 Tap, -20 to +20 dB
Channel Emulator	Generates waveform with insertion loss and simulates waveform with corrected insertion loss Set by loading S-Parameter file (S2 P, S4 P)
ISI	Simulates ISI generation waveform Set using loss (-8.00 to 8.00 dB) at CEI-specified Nyquist frequency Used in combination with channel board, such as J1800A/J1758A (optional accessories parts), or Noise Module MU195050A
Independently Variable PAM4 3 Eye	20 to 50% (PAM4 Amplitude 0/3 level = 100%)
PAM4 Pattern	SSPRQ, PRBS13Q, PRBS31Q, RS-FEC, etc.
PAM4 Pattern Error Addition	MSB Error, LSB Error, LSB&MSB Error, RS-FEC Symbol Error
Tr/Tf (20 to 80%)	8.5 ps (typ., NRZ)
Random Jitter	170 fs rms (typ., NRZ)
Output Connector	V (f)

## PAM4 ED MU196040B

Operation Rates (PAM4/NRZ)	2.4 Gbaud to either 32.1 Gbaud, or 58.2 Gbaud (PAM4)/64.2 Gbaud (NRZ) (option selection)
No. of Channels	1
Input Amplitude	NRZ: $\leq 32.1G$ : 0.05 Vp-p to 1.0 Vp-p, $> 32.1G$ : 0.1 Vp-p to 1.0 Vp-p PAM4: $\leq 32.1G$ : 0.3 Vp-p to 1.0 Vp-p, $> 32.1G$ : 0.4 Vp-p to 1.0 Vp-p
Input Sensitivity (Eye Height)	NRZ: 19 mV @ 26.5625 Gbaud, 21 mV @ 53.125 Gbaud PAM4: 23 mV @ 26.5625 Gbaud, 36 mV @ 53.125 Gbaud
Clock Recovery (Option)	2.4 Gbaud to 32.1 Gbaud, 51 Gbaud to 58.2 Gbaud
Equalizer (Option)	Low-frequency Equalizer ( $\leq 1$ GHz, 2 dB typ.) + DFE (1.4 dB typ.)
PAM4 Patterns	SSPRQ, PRBS13Q, PRBS31Q, etc.
PAM4 Counter	MSB, LSB, Symbol 0 to 3 (Option)
Input Connector	V (f)

## Signal Quality Analyzer-R MP1900A Ordering Information

Please specify the model/order number, name and quantity when ordering.  
The names listed in the chart below are Order Names. The actual name of the item may differ from the Order Name.

### MP1900A

Model/Order No.	Name
MP1900A	<b>Main Frame</b> Signal Quality Analyzer-R
	<b>Standard Accessories</b>
G0342A	ESD DISCHARGER: 1
J1211	POWER CORD. 3M: 1
J1627A	GND connection cable: 1
P0031A	USB Memory: 1
Z0306A	Wrist Strap: 1
	<b>Maintenance Service</b>
MP1900A-ES310	Three Years Extended Warranty Service
MP1900A-ES510	Five Years Extended Warranty Service

### MU181000B\*1

Model/Order No.	Name
MU181000B	<b>Module</b> 12.5 GHz 4port Synthesizer
	<b>Standard Accessories</b>
J1624A	Coaxial Cable 0.3 m (SMA, DC to 18 GHz): 4 pcs
	<b>Option</b>
MU181000B-001	Jitter Modulation
MU181000B-002	SSC Extension
	<b>Retrofit Option</b>
MU181000B-101	Jitter Modulation Retrofit
MU181000B-102	SSC Extension Retrofit
	<b>Maintenance Service</b>
MU181000B-ES310	Three Years Extended Warranty Service
MU181000B-ES510	Five Years Extended Warranty Service

### MU181500B\*1

Model/Order No.	Name
MU181500B	<b>Module</b> Jitter Modulation Source
	<b>Standard Accessories</b>
J1624A	Coaxial Cable 0.3 m (SMA, DC to 18 GHz): 1 pc
J1508A	BNC-SMA Connector Cable (30 cm): 2 pcs
J1137	Terminator: 6 pcs
J1341A	Open: 2 pcs
Z0897A	MP1800A Manual CD: 1 pc
Z0918A	MX180000A Software CD: 1 pc
	<b>Maintenance Service</b>
MU181500B-ES310	Three Years Extended Warranty Service
MU181500B-ES510	Five Years Extended Warranty Service

### MU195050A

Model/Order No.	Name
MU195050A	<b>Module</b> Noise Generator
	<b>Standard Accessories</b>
J1632A	Terminator: 4
J1359A	Coaxial Adapter (K-P, K-J, SMA): 4
J1717A	COAXIAL ADAPTOR (SMA-P, SMA-J): 2
J1341A	Open: 6
J1746A	Skew Match Pair Semrigid Cable (K connector, Data Input1): 1 set
J1747A	Skew Match Pair Semrigid Cable (K connector, Data Input2): 1 set
J1792A	Skew Match Pair Semrigid Cable (V-K connector, MU196020A PPG Output to MU195050A Noise Data Input1): 1 set
	<b>Option</b>
MU195050A-001	White Noise
	<b>Retrofit Option</b>
MU195050A-101	White Noise Retrofit
	<b>Maintenance Service</b>
MU195050A-ES310	Three Years Extended Warranty Service
MU195050A-ES510	Five Years Extended Warranty Service

# Signal Quality Analyzer-R MP1900A Ordering Information

## MU195020A

Model/Order No.	Name
MU195020A	<b>Module</b> 21G/32G bit/s SI PPG
<b>Standard Accessories</b>	
J1632A	Terminator: 5
J1341A	Open: 2
J1359A	Coaxial Adapter (K-P, K-J, SMA): 1
J1717A	COAXIAL ADAPTOR (SMA-P, SMA-J): 6
<b>Option</b>	
MU195020A-001	32G bit/s Extension
MU195020A-010	1ch Data Output
MU195020A-020	2ch Data Output
MU195020A-011	1ch 10Tap Emphasis
MU195020A-021	2ch 10Tap Emphasis
MU195020A-030	1ch Data Delay
MU195020A-031	2ch Data Delay
MU195020A-040	1ch Variable ISI
MU195020A-041	2ch Variable ISI
<b>Retrofit Options</b>	
MU195020A-101	32G bit/s Extension Retrofit
MU195020A-120	2ch Data Output Retrofit
MU195020A-111	1ch 10Tap Emphasis Retrofit
MU195020A-121	2ch 10Tap Emphasis Retrofit
MU195020A-130	1ch Data Delay Retrofit
MU195020A-131	2ch Data Delay Retrofit
MU195020A-140	1ch Variable ISI Retrofit
MU195020A-141	2ch Variable ISI Retrofit
<b>When Option 010/110 Installed</b>	
J1632A	Terminator: 2
J1359A	Coaxial Adapter (K-P, K-J, SMA): 2
<b>When Option 020/120 Installed</b>	
J1632A	Terminator: 4
J1359A	Coaxial Adapter (K-P, K-J, SMA): 4
<b>Maintenance Service</b>	
MU195020A-ES310	Three Years Extended Warranty Service
MU195020A-ES510	Five Years Extended Warranty Service

## MU195040A

Model/Order No.	Name
MU195040A	<b>Module</b> 21G/32G bit/s SI ED
<b>Standard Accessories</b>	
J1632A	Terminator: 2
J1341A	Open: 1
J1717A	COAXIAL ADAPTOR (SMA-P, SMA-J): 4
<b>Option</b>	
MU195040A-001	32G bit/s Extension
MU195040A-010	1ch ED
MU195040A-020	2ch ED
MU195040A-011	1ch CTLE
MU195040A-021	2ch CTLE
MU195040A-022	Clock Recovery
<b>Retrofit Options</b>	
MU195040A-101	32G bit/s Extension Retrofit
MU195040A-120	2ch ED Retrofit
MU195040A-111	1ch CTLE Retrofit
MU195040A-121	2ch CTLE Retrofit
MU195040A-122	Clock Recovery Retrofit
<b>When Option 010/110 Installed</b>	
J1341A	Open: 3
J1359A	Coaxial Adapter (K-P, K-J, SMA): 2
41KC-6	Fixed Attenuator 6 dB: 2
<b>When Option 020/120 Installed</b>	
J1341A	Open: 5
J1359A	Coaxial Adapter (K-P, K-J, SMA): 4
41KC-6	Fixed Attenuator 6 dB: 4
<b>Maintenance Service</b>	
MU195040A-ES310	Three Years Extended Warranty Service
MU195040A-ES510	Five Years Extended Warranty Service

## MU196020A\*4

Model/Order No.	Name
MU196020A	<b>Module</b> PAM4 PPG
<b>Standard Accessories</b>	
J1632A	TERMINATOR: 4
V210	TERMINATOR (V): 2
J1341A	OPEN: 2
J1359A	COAXIAL ADAPTOR (K-P,K-J,SMA): 1
J1717A	COAXIAL ADAPTOR(SMA-P.SMA-J): 5
<b>Option</b>	
MU196020A-001	32G baud*
MU196020A-002	58G baud*
MU196020A-003	64G baud*
MU196020A-011	4Tap Emphasis
MU196020A-030	Data Delay
MU196020A-040	Adjustable ISI
MU196020A-042	FEC Pattern Generation
MU196020A-050	Inter-Module Synchronization
<b>Retrofit Options</b>	
MU196020A-112	32G to 58G baud Extension Retrofit
MU196020A-113	32G to 64G baud Retrofit
MU196020A-123	58G to 64G baud Retrofit
MU196020A-111	4Tap Emphasis Retrofit
MU196020A-130	Data Delay Retrofit
MU196020A-140	Adjustable ISI Retrofit
MU196020A-142	FEC Pattern Generation Retrofit
MU196020A-150	Inter-Module Synchronization Retrofit
<b>Maintenance Service</b>	
MU196020A-ES310	Three Years Extended Warranty Service
MU196020A-ES510	Five Years Extended Warranty Service

## MU196040B\*4

Model/Order No.	Name
MU196040B	<b>Module</b> PAM4 ED
<b>Standard Accessories</b>	
J1632A	TERMINATOR: 2
V210	TERMINATOR (V): 2
J1341A	OPEN: 2
J1359A	COAXIAL ADAPTOR (K-P,K-J,SMA): 1
J1717A	COAXIAL ADAPTOR (SMA-P.SMA-J): 3
41V-6	Fixed Attenuator 6 dB: 2
<b>Option</b>	
MU196040B-001	32G baud (2.4G to 32.1G)
MU196040B-002	58G baud (NRZ: 2.4G to 64.2G, PAM4: 2.4G to 58.2G)
MU196040B-011	Equalizer
MU196040B-021	29G baud Clock Recovery (2.4G to 29G)
MU196040B-022	32G baud Clock Recovery (2.4G to 32.1G)
MU196040B-023	58G baud Clock Recovery Extension (51G to 58.2G)
MU196040B-041	SER Measurement
<b>Retrofit Options</b>	
MU196040B-111	Equalizer Retrofit
MU196040B-112	32G to 58G baud Extension Retrofit
MU196040B-121	29G baud Clock Recovery Retrofit
MU196040B-122	32G baud Clock Recovery Retrofit
MU196040B-123	58G baud Clock Recovery Extension Retrofit
MU196040B-124	32G baud Clock Recovery Extension Retrofit
MU196040B-141	SER Measurement Retrofit
<b>Maintenance Service</b>	
MU196040B-ES310	Three Years Extended Warranty Service
MU196040B-ES510	Five Years Extended Warranty Service

\*: Select any one

# Signal Quality Analyzer-R MP1900A Ordering Information

## MU183020A\*1

Model/Order No.	Name
MU183020A	<b>Module</b> 28G/32G bit/s PPG
	<b>Standard Accessories</b>
J1137	Terminator: 3 pcs
J1359A	Coaxial Adaptor (K-P, K-J, SMA): 1 pc
J1341A	Open: 1 pc
J0541E	6 dB Fixed Attenuator: 1 pc
Z0897A	MP1800A Manual CD: 1 pc
Z0918A	MX180000A Software CD: 1 pc
	<b>Options</b>
MU183020A-001	32G bit/s Extension
MU183020A-012	1ch 2 V Data Output
MU183020A-013	1ch 3.5 V Data Output
MU183020A-022	2ch 2 V Data Output
MU183020A-023	2ch 3.5 V Data Output
MU183020A-030	1ch Data Delay
MU183020A-031	2ch Data Delay
	<b>Retrofit Options</b>
MU183020A-101	32G bit/s Extension Retrofit
MU183020A-112	1ch 2 V Data Output Retrofit
MU183020A-113	1ch 3.5 V Data Output Retrofit
MU183020A-122	2ch 2 V Data Output Retrofit
MU183020A-123	2ch 3.5 V Data Output Retrofit
MU183020A-130	1ch Data Delay Retrofit
MU183020A-131	2ch Data Delay Retrofit
	<b>Standard Accessories for MU183020A-x12, x13</b>
J1137	Terminator: 2 pcs
J1359A	Coaxial Adaptor (K-P, K-J, SMA): 2 pcs
	<b>Standard Accessories for MU183020A-x22, x23</b>
J1137	Terminator: 4 pcs
J1359A	Coaxial Adaptor (K-P, K-J, SMA): 4 pcs
	<b>Maintenance Service</b>
MU183020A-ES310	Three Years Extended Warranty Service
MU183020A-ES510	Five Years Extended Warranty Service

## MU183040B\*1

Model/Order No.	Name
MU183040B	<b>Module</b> 28G/32G bit/s High Sensitivity ED
	<b>Standard Accessories</b>
J1137	Terminator: 2 pcs
J1341A	Open: 1 pc
Z0897A	MP1800A Manual CD: 1 pc
Z0918A	MX180000A Software CD: 1 pc
	<b>Options</b>
MU183040B-001	32 Gbit/s Extension
MU183040B-010	1ch ED
MU183040B-020	2ch ED
MU183040B-022	2.4G to 28.1G bit/s Clock Recovery
MU183040B-023	25.5G to 32.1G bit/s Clock Recovery
	<b>Retrofit Options</b>
MU183040B-101	32 Gbit/s Extension Retrofit
MU183040B-110	1ch ED Retrofit
MU183040B-120	2ch ED Retrofit
MU183040B-122	2.4G to 28.1G bit/s Clock Recover Retrofit
MU183040B-123	25.5G to 32.1G bit/s Clock Recovery Retrofit
	<b>Standard Accessories for MU183040B-x10</b>
J1341A	Open: 2 pcs
J1359A	Coaxial Adaptor (K-P, K-J, SMA): 2 pcs
41KC-6	Precision Fixed Attenuator 6 dB: 2 pcs
	<b>Standard Accessories for MU183040B-x20</b>
J1341A	Open: 4 pcs
J1359A	Coaxial Adaptor (K-P, K-J, SMA): 4 pcs
41KC-6	Precision Fixed Attenuator 6 dB: 4 pcs
	<b>Maintenance Service</b>
MU183040B-ES310	Three Years Extended Warranty Service
MU183040B-ES510	Five Years Extended Warranty Service

\*1: Other MP1800A-series modules will be supported one-by-one in future. Refer to the selection guide for details.

## Software

Model/Order No.	Name
MX183000A	High-Speed Serial Data Test Software
MX183000A-PL001	Jitter Tolerance Test
MX183000A-PL011	PCIe Link Sequence
MX183000A-PL021	PCIe Link Training
MX183000A-PL022	USB Link Training
MX183000A-PL031	DUT Error Counts Import

## On Using VISA\*2

The National Instruments™ (NI hereafter) NI-VISA\*3 software must be installed to use the MX183000A (this product hereafter). We recommend using NI-VISA saved on the product USB memory stick. Customers may only use NI-VISA saved on the product memory stick. NI-VISA on the memory stick may not be used for other applications with other products. When uninstalling this product from the controller PC, etc., also uninstall NI-VISA from the USB memory.

\*2: Abbreviation for Virtual Instrument Software Architecture. This is I/O software for remote control of measuring instruments via GPIB, Ethernet and USB interfaces.

\*3: NI-VISA was developed by National Instruments for VXI Plug&Play Alliance standards compliant I/O interfaces. National Instruments™, NI™, and NI-VISA™ are registered trademarks of National Instruments Corporation.

# Signal Quality Analyzer-R MP1900A Ordering Information

## Optional Accessories

Model/Order No.	Name
J1632A	Terminator
V210	TERMINATOR (V)
J1678A	ESD Protection Adapter-K
J1679A	ESD Protection Adapter-V
J1359A	Coaxial Adapter (K-P, K-J, SMA)
34VFK50	Fixed Adapter (V-F, K-M)*4
34VKF50	Fixed Adapter (V-M, K-F)
41KC-3	Fixed Attenuator 3 dB
41KC-6	Fixed Attenuator 6 dB
41KC-10	Fixed Attenuator 10 dB
41KC-20	Fixed Attenuator 20 dB
41V-3	Fixed Attenuator 3 dB
41V-6	Fixed Attenuator 6 dB
41V-10	Fixed Attenuator 10 dB
41V-20	Fixed Attenuator 20 dB
J1758A	ISI Board
J1800A	ISI Board V
K261	DC Block
K240C	Precision Power Divider
V240C	Fixed Power divider
J1510A	Pick OFF Tee (K)
J1793A	Pick OFF Tee (V)
K241C	Power Splitter
J1748A	Power Splitter (1.5 GHz to 18 GHz, SMA, using MU195020A × 4 to MU181500B connection)
J1624A	COAXIAL CABLE 0.3 m (18 GHz and SMA)
J1342A	COAXIAL CABLE 0.8 m (APC3.5 connector)
J1439A	Coaxial cable (0.8 m, K connector)
J1625A	Coaxial Cable 1 m (18 GHz, SMA)
J1449A	Measurement kit (J1324A × 2, J1439A × 2, J1625A × 1)
J1550A	Coaxial skew match cable (0.8 m, APC3.5 connector)
J1551A	Coaxial skew match cable (0.8 m, K connector)

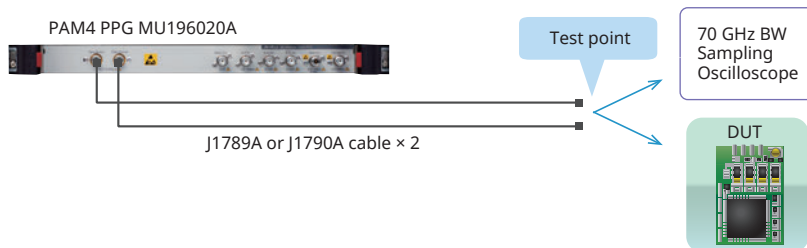
Model/Order No.	Name
J1728A	Electrical Length Specified Coaxial Cable (0.4 m, K connector)
J1741A	Electrical Length Specified Coaxial Cable (0.8 m, K Connector)
J1789A	Electrical Length Specified Coaxial Cable*4 (0.4 m, V connector)
J1790A	Electrical Length Specified Coaxial Cable*4 (0.8 m, V connector)
J1792A	Skew match pair semirigid cable (V-K connector, MU196020A PPG Output to MU195050A Noise Data Input1)
J1761A	PCIe Reference Clock Cable Kit
Z2025A	PCIe CBB Controller
Z2029A	PCIe Reference Clock Buffer
W3911AE	MP1900A Operation Manual
W3913AE	MX190000A Operation Manual
W3813AE	MX183000A Operation Manual
W3915AE	MU195020/40/50A Operation Manual
W3976AE	MU196020/40A OPERATION MANUAL
B0576A	Blank Panel
B0736A	Front Cover (For MP1900A)
B0737A	Carrying Case (For MP1900A, with G0736A)
B0738A	Rack Mount Kit (For MP1900A)
Z1746A	Stylus
Z0541A	USB Mouse
J0008	GPIO CABLE, 2.0 m
Z0917A	Shielded LAN Cable, 5 m
Z1953A	Gigabit Ethernet Switch (5 Port)
Z0306A	Wrist Strap
Z1964A	Torque Wrench (Right Angle)

## J1815A MP1900A PCIe Measurement Component Set

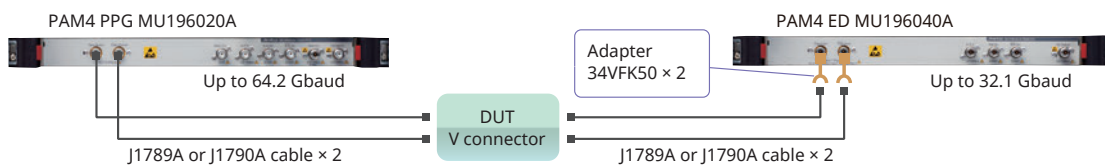
The following table lists the component set required by the PCIe Tx/Rx LEQ test.

Model/Order No.	Name	Qty.	Application
J1551A	Coaxial skew match cable (0.8 m, K connector)	4	Tx LEQ, Rx LEQ
J1625A	Coaxial cable (1m, SMA connector)	2	Tx LEQ, Rx LEQ
J1510A	Pick OFF Tee	2	Tx LEQ
J1761A	PCIe Reference Clock Cable Kit	2	Tx LEQ, Rx LEQ
K261	DC Block	2	Tx LEQ
K241C	Power Splitter	2	Tx LEQ

\*4: We recommend using either the J1789A or J1790A as the coaxial cable for the MU196020A data output. Recommend using coaxial cable J1789A for MU196040B Data IN. The MU196020A data output specifications are defined based on the performance observed using a 70-GHz bandwidth oscilloscope connected as shown below.



The MU196020A Data OUT and MU196040B Data IN connectors, and the J1789A/J1790A cables all use V-connectors. Consequently, for K-connectors, use 34VFK50 adapters as shown in the following figure.



Setup with V-Connector DUT

**• United States****Anritsu Americas Sales Company**

450 Century Parkway, Suite 190, Allen,  
TX 75013, U.S.A.

Phone: +1-800-Anritsu (1-800-267-4878)

**• Canada****Anritsu Electronics Ltd.**

700 Silver Seven Road, Suite 120, Kanata,  
Ontario K2V 1C3, Canada

Phone: +1-613-591-2003

Fax: +1-613-591-1006

**• Brazil****Anritsu Eletronica Ltda.**

Praça Amadeu Amaral, 27 - 1 Andar  
01327-010 - Bela Vista - Sao Paulo - SP, Brazil

Phone: +55-11-3283-2511

Fax: +55-11-3288-6940

**• Mexico****Anritsu Company, S.A. de C.V.**

Bvld Miguel de Cervantes Saavedra #169 Piso 1, Col. Granada  
Mexico, Ciudad de Mexico, 11520, MEXICO

Phone: +52-55-4169-7104

**• United Kingdom****Anritsu EMEA Ltd.**

200 Capability Green, Luton, Bedfordshire, LU1 3LU, U.K.  
Phone: +44-1582-433200

Fax: +44-1582-731303

**• France****Anritsu S.A.**

12 avenue du Québec, Bâtiment Iris 1-Silic 612,  
91140 VILLEBON SUR YVETTE, France

Phone: +33-1-60-92-15-50

Fax: +33-1-64-46-10-65

**• Germany****Anritsu GmbH**

Nemetschek Haus, Konrad-Zuse-Platz 1  
81829 München, Germany

Phone: +49-89-442308-0

Fax: +49-89-442308-55

**• Italy****Anritsu S.r.l.**

Via Elio Vittorini 129, 00144 Roma, Italy

Phone: +39-6-509-9711

Fax: +39-6-502-2425

**• Sweden****Anritsu AB**

Isafjordsgatan 32C, 164 40 KISTA, Sweden  
Phone: +46-8-534-707-00

**• Finland****Anritsu AB**

Teknobulevardi 3-5, FI-01530 VANTAA, Finland

Phone: +358-20-741-8100

Fax: +358-20-741-8111

**• Denmark****Anritsu A/S**

c/o Regus Fairway, Arne Jacobsens Allé 7, 5th floor  
2300 Copenhagen S, Denmark

Phone: +45-7211-2200

**• Russia****Anritsu EMEA Ltd.****Representation Office in Russia**

Tverskaya str. 16/2, bld. 1, 7th floor.

Moscow, 125009, Russia

Phone: +7-495-363-1694

Fax: +7-495-935-8962

**• Spain****Anritsu EMEA Ltd.****Representation Office in Spain**

Paseo de la Castellana, 141. Planta 5, Edificio Cuzco IV

28046, Madrid, Spain

Phone: +34-91-572-6761

**• United Arab Emirates****Anritsu EMEA Ltd.****Dubai Liaison Office**

902, Aurora Tower,  
P O Box: 500311- Dubai Internet City

Dubai, United Arab Emirates

Phone: +971-4-3758479

Fax: +971-4-4249036

**• India****Anritsu India Private Limited**

6th Floor, Indiqube ETA, No.38/4, Adjacent to EMC2,

Doddanekundi, Outer Ring Road, Bengaluru - 560048, India

Phone: +91-80-6728-1300

Fax: +91-80-6728-1301

**• Singapore****Anritsu Pte. Ltd.**

11 Chang Charn Road, #04-01, Shriro House  
Singapore 159640

Phone: +65-6282-2400

Fax: +65-6282-2533

**• P.R. China (Shanghai)****Anritsu (China) Co., Ltd.**

Room 2701-2705, Tower A,  
New Caohejing International Business Center

No. 391 Gui Ping Road Shanghai, 200233, P.R. China

Phone: +86-21-6237-0898

Fax: +86-21-6237-0899

**• P.R. China (Hong Kong)****Anritsu Company Ltd.**

Unit 1006-7, 10/F., Greenfield Tower, Concordia Plaza,

No. 1 Science Museum Road, Tsim Sha Tsui East,  
Kowloon, Hong Kong, P.R. China

Phone: +852-2301-4980

Fax: +852-2301-3545

**• Japan****Anritsu Corporation**

8-5, Tamura-cho, Atsugi-shi, Kanagawa, 243-0016 Japan

Phone: +81-46-296-6509

Fax: +81-46-225-8352

**• Korea****Anritsu Corporation, Ltd.**

5FL, 235 Pangyoyeok-ro, Bundang-gu, Seongnam-si,  
Gyeonggi-do, 13494 Korea

Phone: +82-31-696-7750

Fax: +82-31-696-7751

**• Australia****Anritsu Pty. Ltd.**

Unit 20, 21-35 Ricketts Road,  
Mount Waverley, Victoria 3149, Australia

Phone: +61-3-9558-8177

Fax: +61-3-9558-8255

**• Taiwan****Anritsu Company Inc.**

7F, No. 316, Sec. 1, NeiHu Rd., Taipei 114, Taiwan

Phone: +886-2-8751-1816

Fax: +886-2-8751-1817