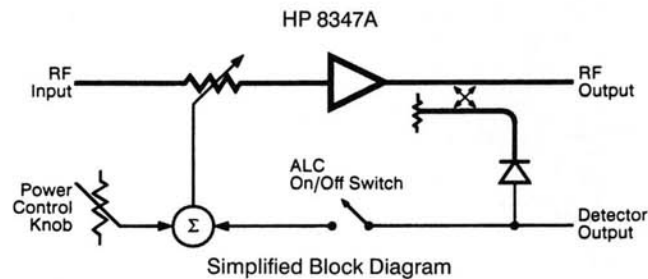
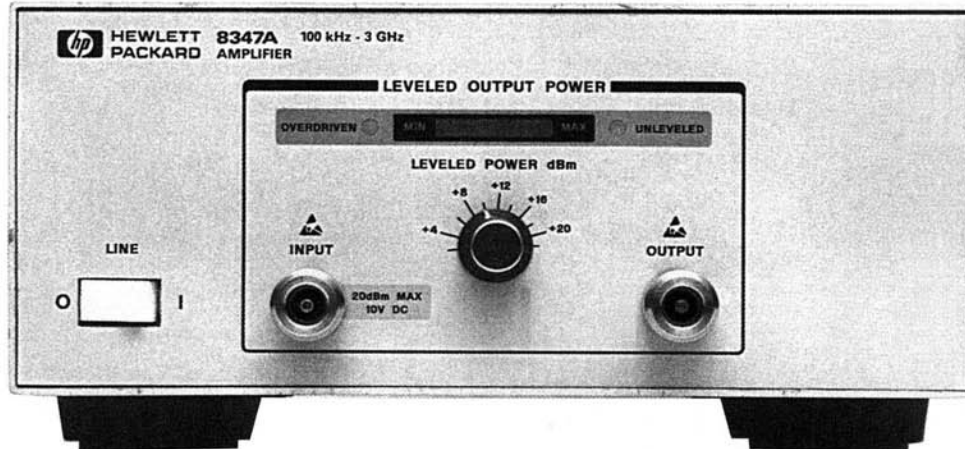


AMPLIFIERS

RF Amplifier HP 8347A

- Broadband 100 kHz to 3 GHz coverage
- +20 dBm output power
- Low harmonics
- 25 dB gain
- Internally leveled



Specifications

Frequency range: 100 kHz to 3 GHz
Maximum leveled output power: $\geq +20$ dBm
Output power leveling range (≥ 300 kHz): +2 to +20 dBm
Power flatness (internally leveled, ± 300 kHz): ± 1.5 dB
Gain: ≥ 25 dB
Harmonics (at +20 dBm output)
Internal leveling off (ALC off): ≤ -25 dBc
Internal leveling on (ALC on): ≤ -20 dBc

Supplemental Characteristics

Maximum input for minimum internally leveled output: -14 dBm
1 dB compression point: +22 dBm
Third-order intercept: +30 dBm
RF input and output impedances: 50 ohms
VSWR
Input: 2.0:1
Output
Internally leveled: 1.5:1
Unleveled:
 Below 2 GHz: 2.0:1
 2 to 3 GHz: 3.0:1

Reverse isolation: 60 dB

Noise Figure

10 MHz to 3 GHz: 15 dB
Below 10 MHz: 20 dB

General

RF input and output connectors: Type N female
Size: 102 mm H \times 213 mm W \times 298 mm D (4.0 in \times 8.4 in \times 11.8 in)
Weight: Net, 4 kg (8 lb); shipping, 5 kg (11 lb)

Ordering Information

HP 8347A RF Amplifier

Price
\$4,250