

# SHURflo's REMOTE SOLUTION

## Model 9300 Series

### SUBMERSIBLE PUMP APPLICATIONS:

- Irrigation
- Livestock Watering
- Remote Homes & Cabins
- Ponds
- Islands



SHURflo's NEW  
"Watertite-Gland" Design PAT. PEND.

**SHURflo's NEW 9300 Series Solar-Powered Submersible Pump. Rugged, Durable . . . and Built to Last!**

SHURflo's 9300 Series Pumps are backed by 25 years of research and engineering experience. Designed to be strong and yet lightweight, these pumps are easily repaired in the field. SHURflo provides a wide-range of parts and kits for ease of rebuilding and repair.

### "GLAND" CONNECTOR FEATURES:

- Waterblocked Electrical Connector.
- Impervious gland connection design prevents waterwicking. (Pat. Pend.)
- Quick Disconnect — No splicing necessary.
- Accepts a variety of jacketed cables.

### 9300 SERIES PUMP FEATURES:

- Strong Construction, yet lightweight (6 lbs.).
- Corrosion-proof housing with stainless-steel fasteners.
- Dry Running capability without pump damage.
- Internal Bypass Feature for pump protection.
- Long-life, 24 VDC Operation.
- Easily repaired in the field.
- 25 years of manufacturing experience with diaphragm pumps.
- State of the art solid diaphragm.





# SHURflo®

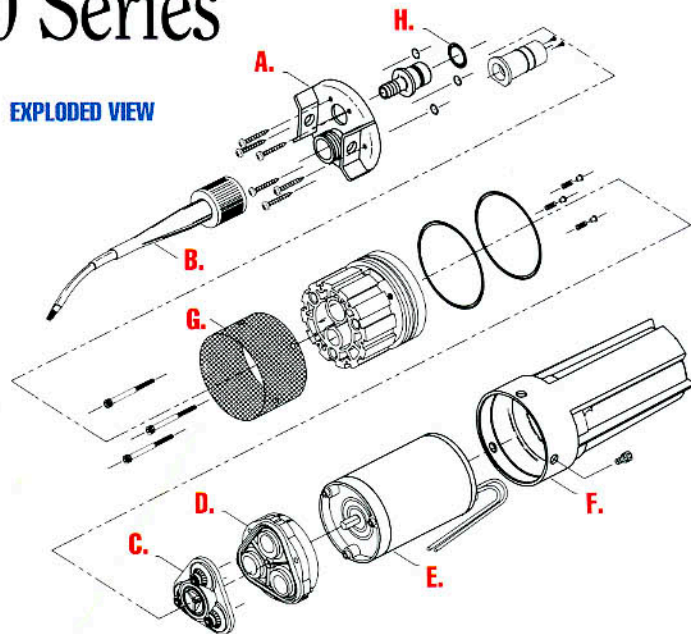
## Model 9300 Series

### 24 VDC 9300 SUBMERSIBLE PUMP FLOW CHART PRODUCES 820-1170 GALLONS (3110-4428 LITRES) PER DAY

TOTAL VERTICAL LIFT		FLOW RATE PER HOUR		SOLAR ARRAY SIZE MINIMUM TOTAL POWER RATING	CURRENT AMPS
FEET	METERS	GAL.	LTR.	WATTS	
20	6.1	117	443	58	1.5
40	12.2	114	432	65	1.7
60	18.3	109	413	78	2.1
80	24.4	106	401	89	2.4
100	30.5	103	390	99	2.6
120	36.6	101	382	104	2.8
140	42.7	99	375	115	3.1
160	48.8	98	371	123	3.3
180	54.9	93	352	135	3.6
200	61.0	91	345	141	3.8
230	70.1	82	310	155	4.1

**NOTE:** Use of an LCB (Linear Current Booster) Unit is required for optimum performance. Minimum total power rating shows minimum array watts required to perform as shown.

### EXPLODED VIEW



### REPLACEMENT PART KITS:

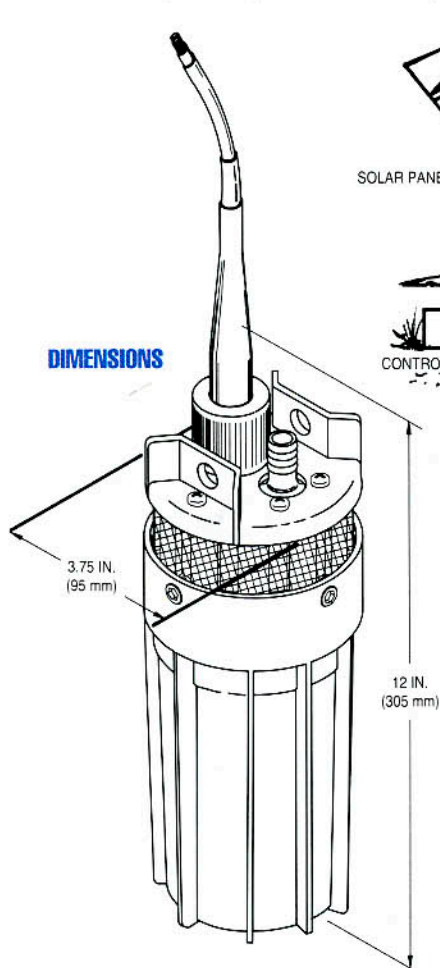
- |                                |                          |
|--------------------------------|--------------------------|
| (A) LIFT PLATE                 | (F) CANISTER KIT         |
| (B) CABLE PLUG KIT             | (G) FILTER SCREEN KIT    |
| (C) VALVE KIT                  | (H) O-RING KIT           |
| (D) LOWER HOUSING ASSEMBLY KIT | (I) TOOL KIT (NOT SHOWN) |
| (E) MOTOR KIT                  |                          |

\* All kits may consist of more parts than shown in exploded view.

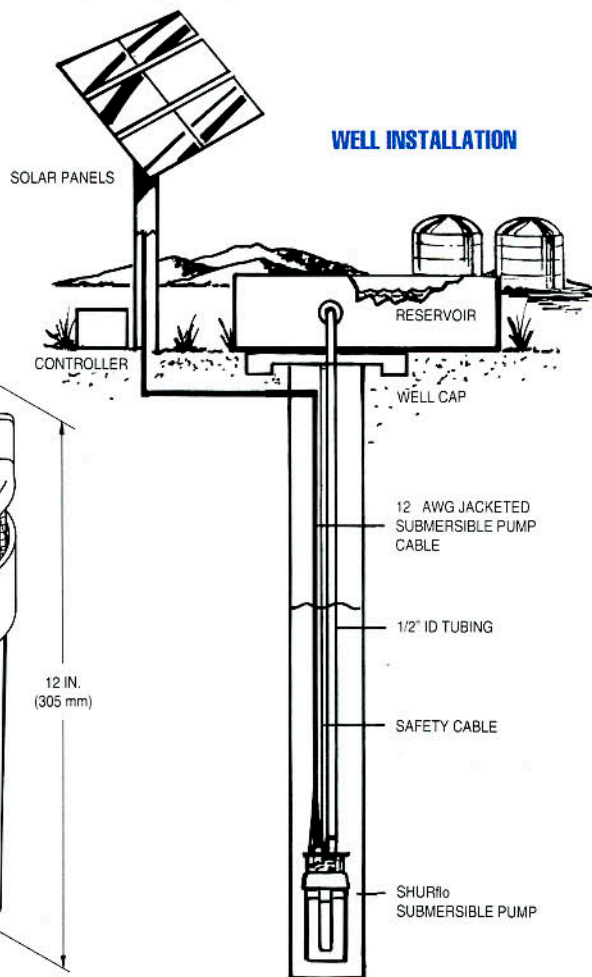
### TECHNICAL SPECIFICATIONS:

<b>MODEL NUMBER</b>	9325-043-101
<b>PUMP DESIGN</b>	Positive Displacement 3 Chamber Diaphragm Pump
<b>CAM</b>	3.0 Degree
<b>MOTOR</b>	Permanent Magnet, P/N 11-175-00, Thermally Protected
<b>VOLTAGE</b>	24 VDC Nominal
<b>AMPS</b>	4.0 Maximum
<b>INTERNAL BYPASS</b>	105-110 PSI Max. (7.2-7.5 BARS)
<b>MAXIMUM LIFT</b>	230 Feet Maximum (70 Meters)
<b>MAXIMUM SUBMERSION</b>	100 Feet Maximum (30 Meters)
<b>OUTLET PORT</b>	1/2" (12.7mm) Barbed Fitting for 1/2" (12.7mm) I.D. Tubing
<b>INLET</b>	50 Mesh Stainless Steel Screen
<b>MATERIALS</b>	High Strength Engineered Plastics, Stainless Steel Fasteners
<b>TYPICAL APPLICATIONS</b>	Potable Water Well Pump
<b>NET WEIGHT</b>	6 LBS. (2.7 Kgs.)

### DIMENSIONS



### WELL INSTALLATION



#### SHURflo EAST

52748 Park Six Court  
Elkhart, Indiana 46514-5427  
Phone: (800) 762-8094 • (219) 262-0478  
FAX: (219) 264-2169

#### SHURflo HEADQUARTERS

Mailing Address: 12650 Westminster Avenue  
Santa Ana, California 92706-2100  
Shipping Address: 12650 Westminster Avenue  
Garden Grove, California, 92843  
Phone: (800) 854-3218 • (714) 554-7709  
FAX: (714) 554-4721

#### SHURflo EUROPE

SHURflo Limited  
Unit 5, Sterling Park  
Gatwick Road, Crawley  
West Sussex, RH10 2QT, UK  
Phone: 44-(0) 1293-424050  
FAX: 44-(0) 1293-421880

www.shurflo.com

