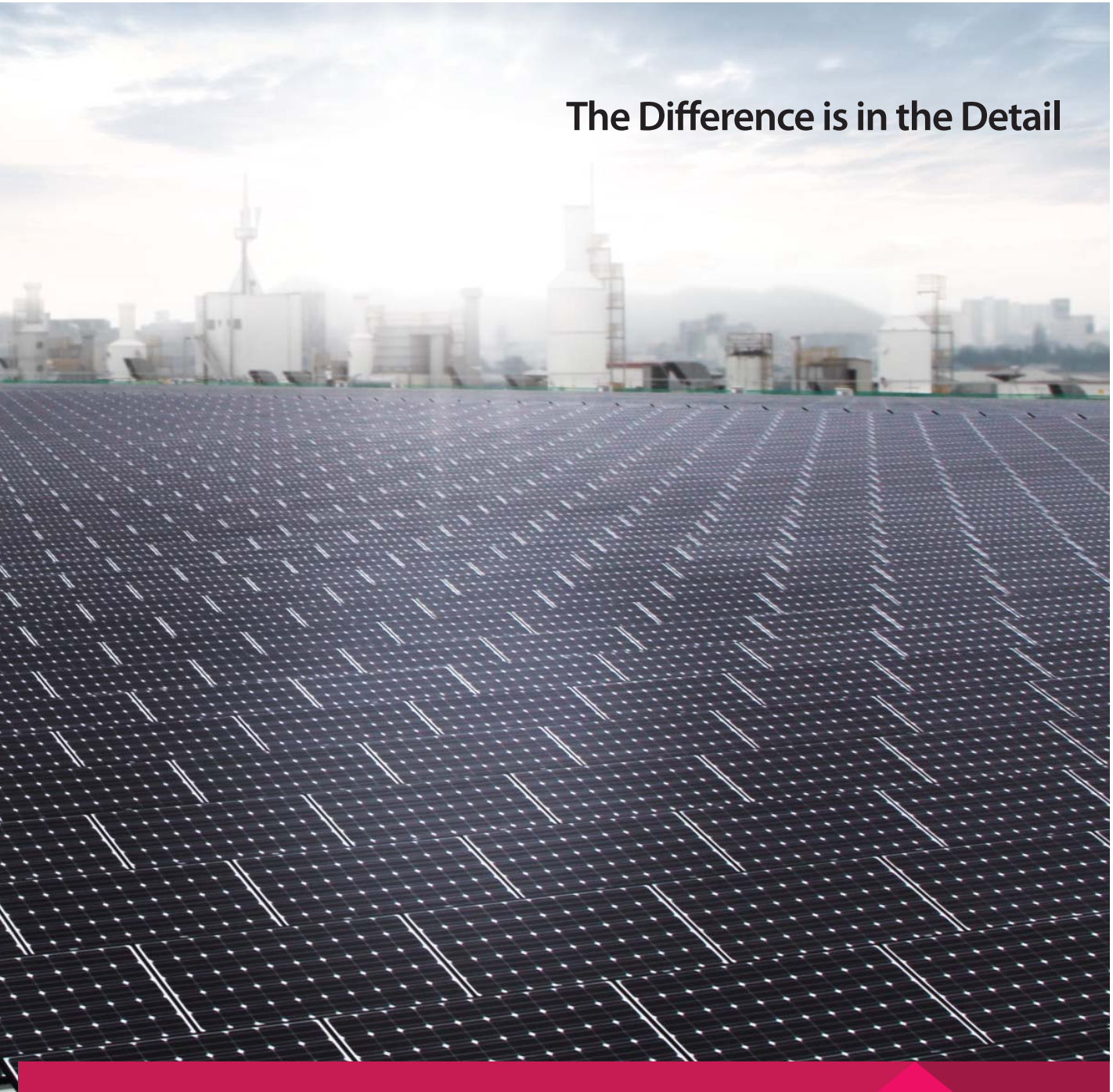


The Difference is in the Detail




MonoXTM
Your trusted partner for clean energy

Solar panels can generate electricity
for **25 years** or more.

This is about
the amount of time it takes
a newborn to mature into an adult.

From which company
should you want to get modules
for the next **25 years**?

A young girl with brown hair and a pink flower in her hair is smiling and holding a small globe of the Earth in her hands. She is wearing a white dress with a colorful floral pattern. The background is a bright blue sky with large, fluffy white clouds and a bright sunburst effect in the upper center. The overall mood is hopeful and optimistic.

From which company
should you want
to get modules for the next

25 years ?

Reliable Brand

- Customer trust for the company
- A foundation built on experience and history

History of LG

Pioneering Technology and Innovation

1947~1958

Foundation

Establishment of
Lak Hui Chemical Industrial Corp. (now LG Chem)
and Goldstar (now LG Electronics)

1959~1969

Innovation

Korea's first Radios,
Refrigerators, TVs, Air Conditioners, Washing Machines

1970~1989

Growth & Globalization

Achievement of USD 100 Million in exports
Establishment of first overseas production base in the US

History of LG Solar

1990~1999

Face of the Future

Change of company name
to Electronics and Zenith take over.

2000~2009

Global Brand LG

market leader for CDMA mobile phones for the 1st time
Became the second-largest LCD TV provider worldwide

2010~Present

Faster and Smarter

Introduced Optimus, LG's smartphone brand
Introduced CINEMA 3D,
LG's answer to cumbersome shutter-glasses 3D TVs

1995



LG Industrial Systems
developed public PV
application
(traffic signs)

1985



Gold Star Electronics
conducted its first solar
cell multicrystalline R&D

LG is, a global Solar brand with a quarter century history of reliability.

2013

Market introduction of Mono X™ NeoN, the brand new N-type module

2012

Achieved world's top P-type cell efficiency of 20.7%

(Based on internal measurements – as of 2012)

Had the most patent applications over the past three years

(In the U.S. and Europe, Focust figures – as of July 2012)

Reached 400MW accumulated production supply.

Sold in 32 countries worldwide

2010

Mass production began

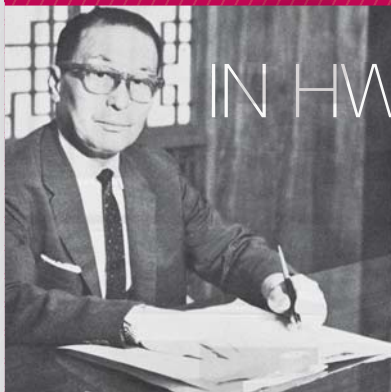
2007

LG Solar Energy operated its first 14MW solar farm in Taejeon, Korea.

Reliable Quality

- A lasting promise to our customers
- Production lines that embody hard work and our corporate mission

LG's insistence on quality control comes from our founder



IN HWOI KOO

“

Mark my words:

It takes a single faulty product out of a hundred to write off the rest of the batch.

Our goal is not quantity, but quality.

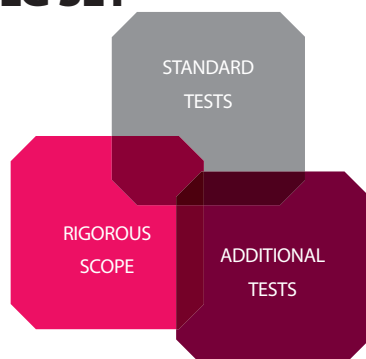
You must understand that credibility cannot be compromised, not for a single product.

”

Various types of tests conducted for quality control, the LG way.



LG SET *



* LG's
Severe
Environment
Test

Reliable Performance

- Confidence in our product
- Value of our products

**3 Values LG Mono X™
promises to bring to you**





Industry-leading Product

LG Electronics' product leadership is one based on the extreme technological edge. To create unrivaled contemporary products, we believe in creating value with our product essence. This value can be yours for the next 25 years, made possible by LG's solar modules. LG Electronics has always had a long standing policy of never ceasing its technological innovation. Our hard work has paid off. LG Electronics has achieved a mass production efficiency rate of 19.8% (P type, end of 2012), the highest in the industry. Now is the time to experience true product leadership with LG Mono X™.



Customer-centric Design

LG Electronics painstakingly mapped out every detail in our products to provide a better customer experience. LG Mono X™ offers design beyond beauty. LG Mono X™ was designed so that even installation becomes the more convenient for our customers.



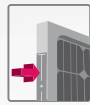
All-around Durability

LG Electronics builds modules to withstand various types kinds of weather. Because solar modules are installed on rooftops and wide open spaces, they're constantly exposed to environmental wear and tear. Experience all-around durability with the Mono X™, which was developed in accordance with LG's Quality Management System.



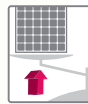
Details designed to last

Clamp Guideline Marks



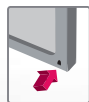
When installing a solar module, the installing crew must measure the correct location of the clamp. The clamp guidelines marked on the Mono X™ frame indicates where it can support the maximum mechanical load, and also save the measuring time. Further, the stability and security of the module is enhanced when clamped in the correct location.

Light and Robust Module

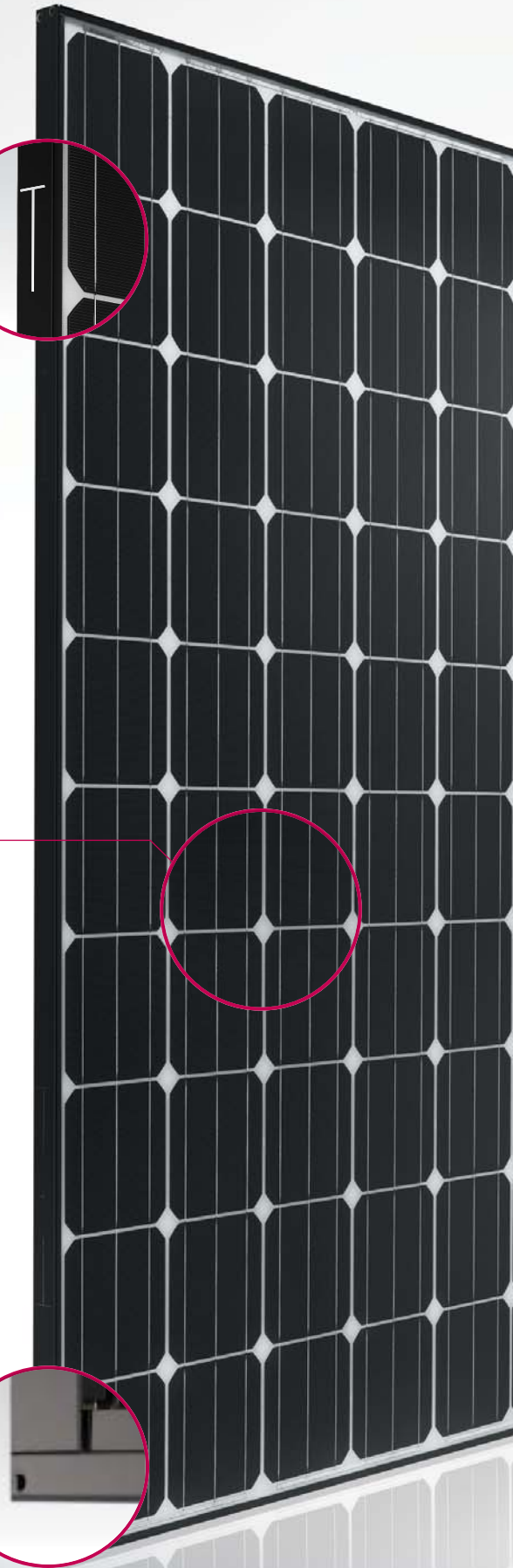


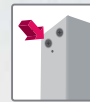
LG Mono X™ was built as a lightweight model, although it maintains the robust build of its predecessor. Lighter modules allow for lower static load requirements for the roof. Lighter modules also improve the productivity and health of the workers installing them.

Great Water Drain Design



When a module has been out in the rain, it accumulates dust. Even the tiniest particles of this dust can reduce the power supply because it screens the sun's rays. Mono X™ was designed with a built-in incline where the frame and the glass meet to drain the rainwater quickly.





Softer and Safer Edges

The installment crew tends to get into accidents or rip their gloves on the sharp edges of the modules they carry around. LG Mono X™ has solved this problem by altering the shape of the frames with softer edges for the safety of the crew and users.



Better Grips

LG Mono X™ was designed with more curves for a better grip. This way, it becomes safer for the installment crew to transport the module.



Fixed Cables

When installing the module, connect all the cables on the backside and tie them to the module frame. Most conventional modules have cables draped in the middle and take more time to install. But the cables for LG Mono X™ are fixed to the frame, allowing for a quick and easy installment as it takes less time to locate the cables.



3-Way Grounding Holes

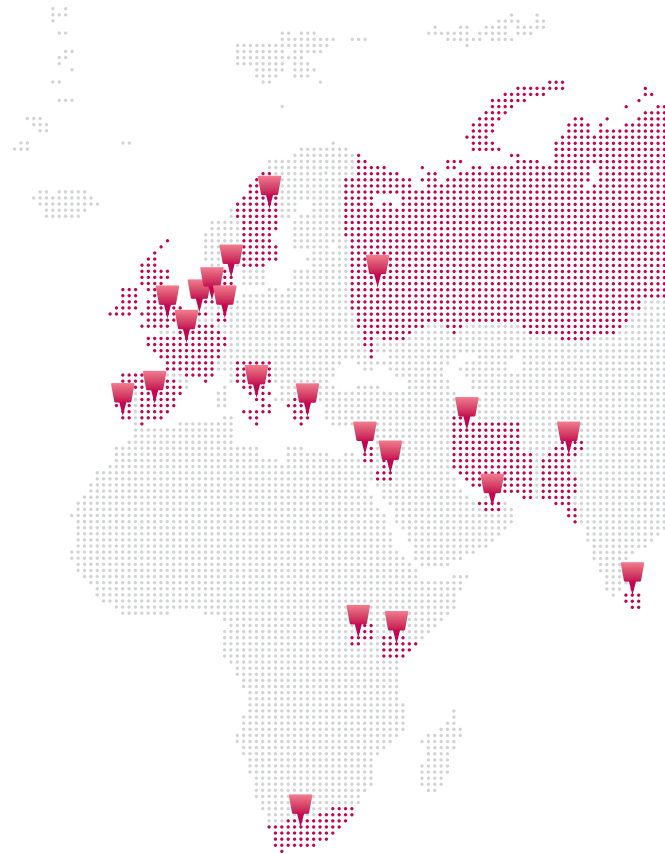
Grounding, a method involving fixing the frames to the ground, is recommended to prevent electrical accidents. In conventional modules, the grounding holes are located only on the backside of the frame, but on LG Mono X™, there are additional holes on the sides that make for easier installation.

Services tailored to last

Export markets

USA	Spain
Brazil	France
Dominican Republic	Japan
Panama	Australia
Argentina	Kenya
Germany	Uganda
England	Pakistan
Italy	Iran
Greece	Israel
Denmark	Republic of South Africa
Belgium	Thailand
Portugal	Malaysia
Luxembourg	UAE
Netherlands	Jordan
Russia	Sri Lanka
	Philippines

- Production Subsidiary
- Sales Subsidiary



Residential



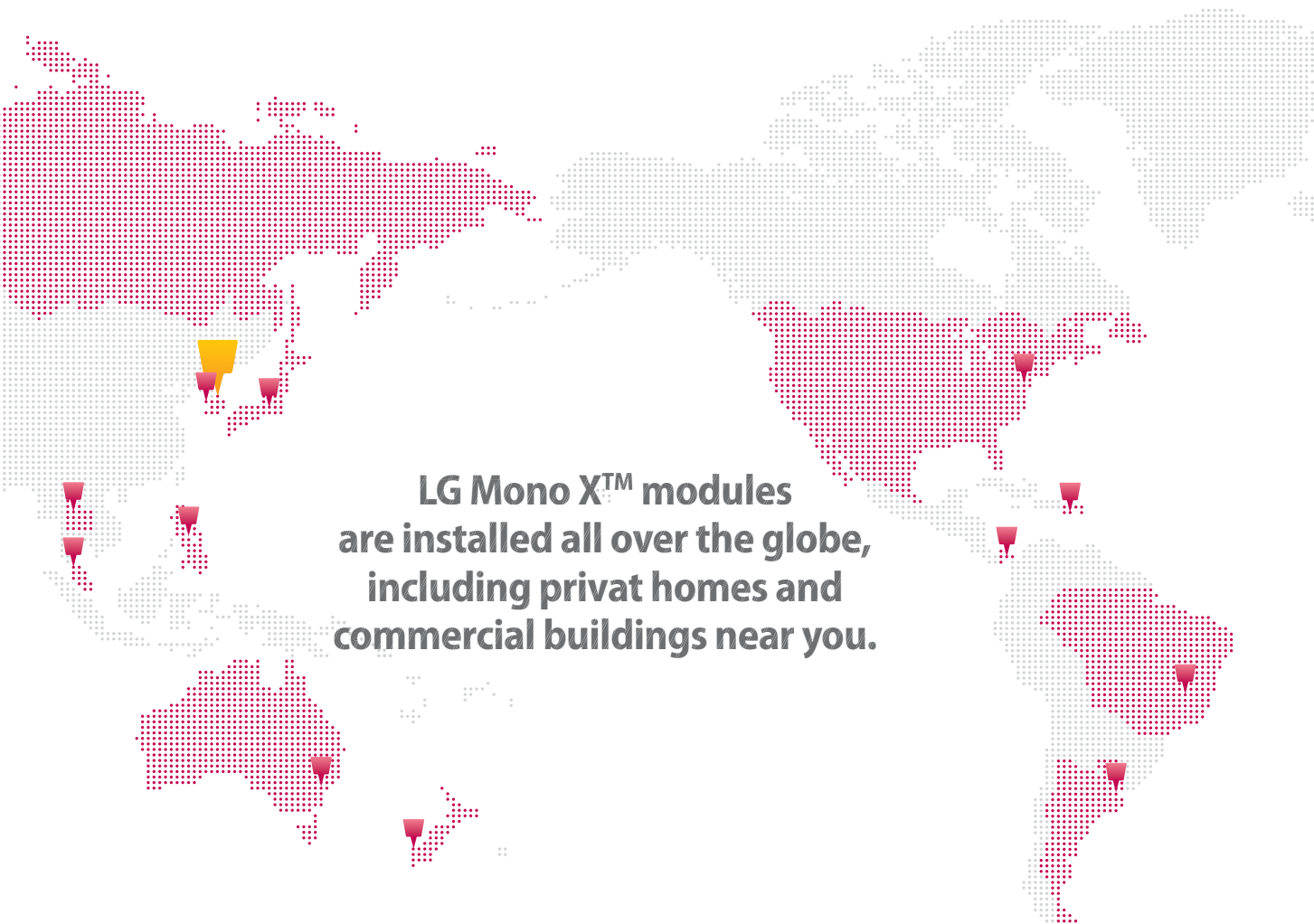
Waging am See, Germany



Wabern-Falkenberg, Germany



Randow, Germany



**LG Mono X™ modules
are installed all over the globe,
including privat homes and
commercial buildings near you.**

Commercial



Jarmen, Germany

Utility



Ochang, Korea

For LG, Solar means producing power
for the next 25 years of your life.

LG Mono X™ promises a brighter
future for you and your children
with its reliable brand,
quality management system,
and performance.



CHOONGHO LEE

Senior Vice President's message

The secret to the long lived popularity of high quality products lies in LG's ceaseless endeavour to design the best solar module. Through its tireless work and efforts to develop an ever better performing solar energy module, the solar business division of LG Electronics, has gained product leadership. This is the best way we believe we can offer you consistent values in such uncertain times.





LG Electronics Deutschland GmbH
EU Solar Business Group
Berliner Straße 93,
40880 Ratingen, Germany

www.lg-solar.com